



UK Health  
Security  
Agency

# Sexually Transmitted Infections in England, 2023

**Dr. Hamish Mohammed and Dr. Katy Sinka**  
**Blood Safety, Hepatitis, STIs and HIV Division**

*A blueprint for the future: sexual reproductive health and HIV services in England*  
LGA (Virtual Meeting) – 10<sup>th</sup> Sept 2024

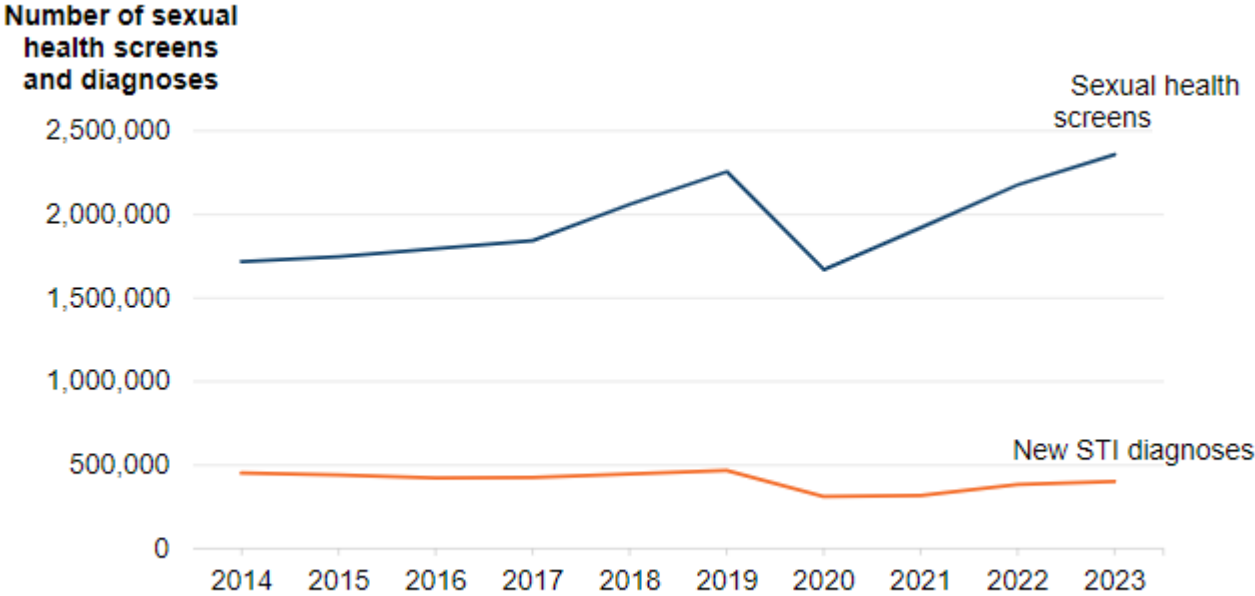
# There was an increase in STI diagnoses between 2022 and 2023

**401,800**

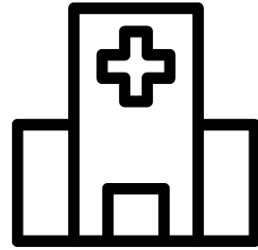
New STI diagnoses

**5% ↑**

vs. 2022



# There was a 5% increase in attendances & consultations between 2022 and 2023



Created by hazicon  
from Noun Project

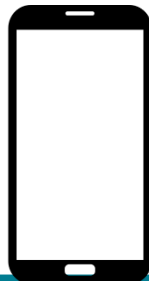
**2023\***

↑ **8%**



Created by Andy M  
from Noun Project

↓ **17%**



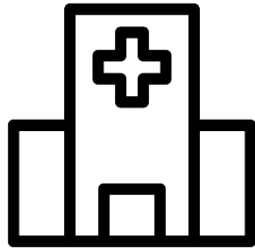
Created by Nathan Grealish  
from Noun Project

↑ **8%**

**\*vs. 2022**

# 4,610,410

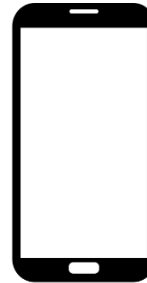
## attendances & consultations at sexual health services in 2023



Created by hazicon  
from Noun Project

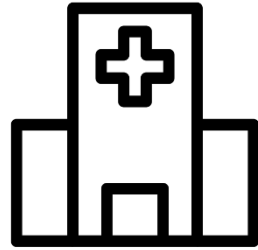


Created by Andy M  
from Noun Project



Created by Nathan Greatish  
from Noun Project

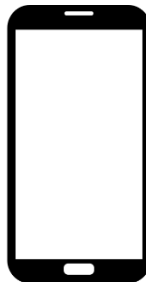
# 4 in 10 SHS attendances & consultations were online in 2023



Created by hazicon  
from Noun Project



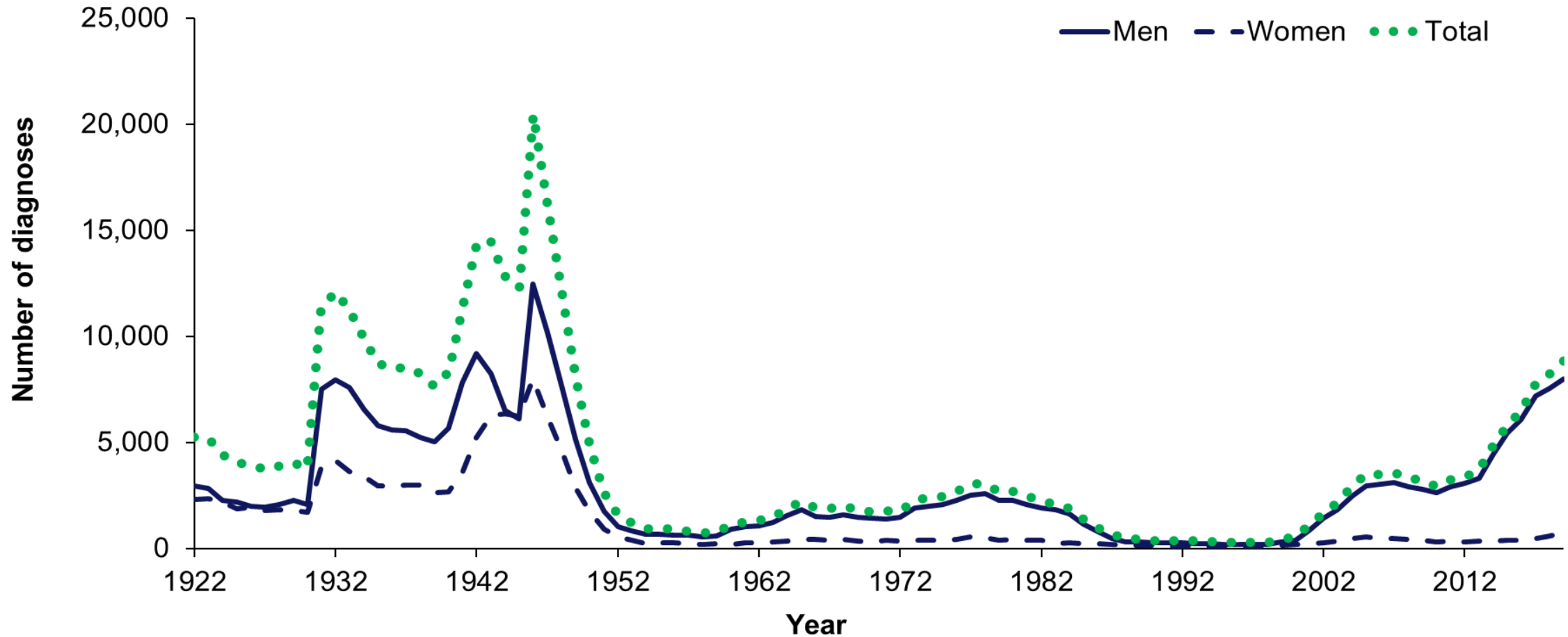
Created by Andy M  
from Noun Project



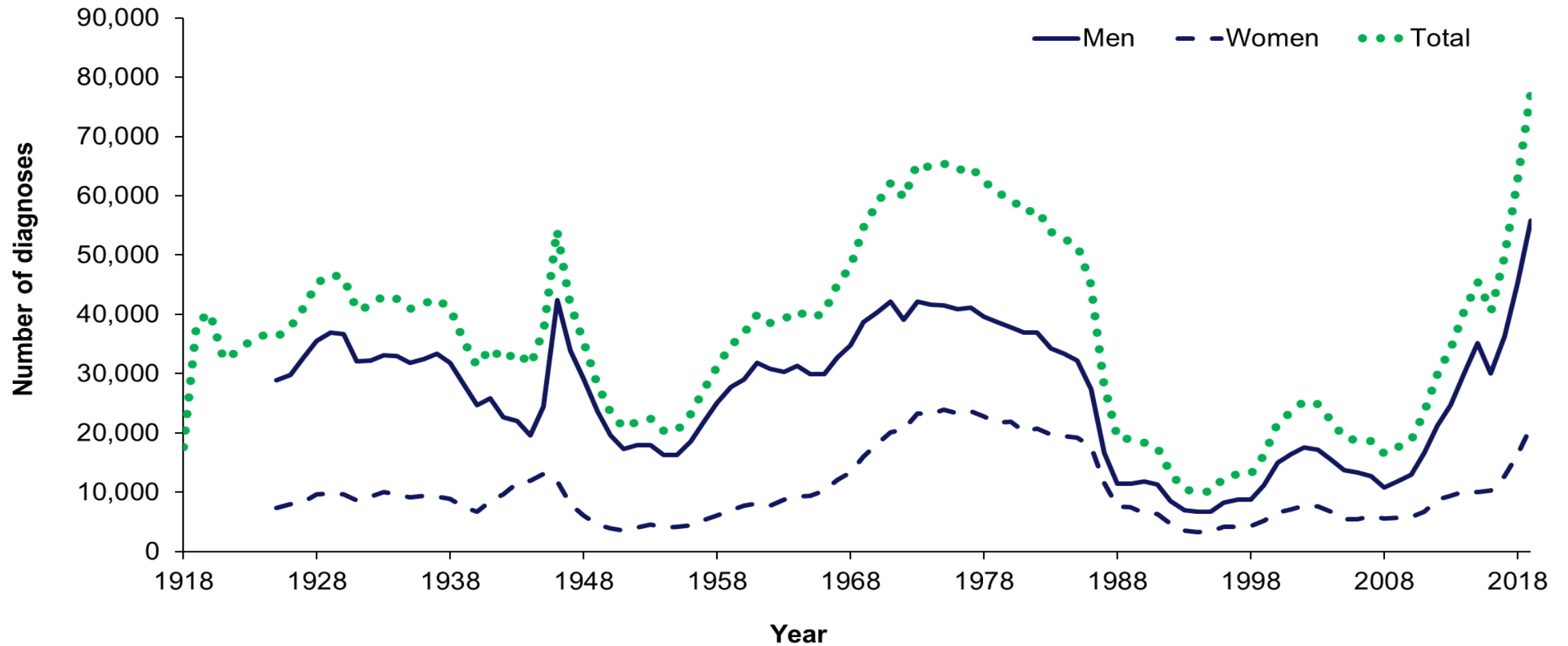
Created by Nathan Grealish  
from Noun Project



# Increasing trend in syphilis since the early 2000s



# Gonorrhoea has also been increasing since the 2000s



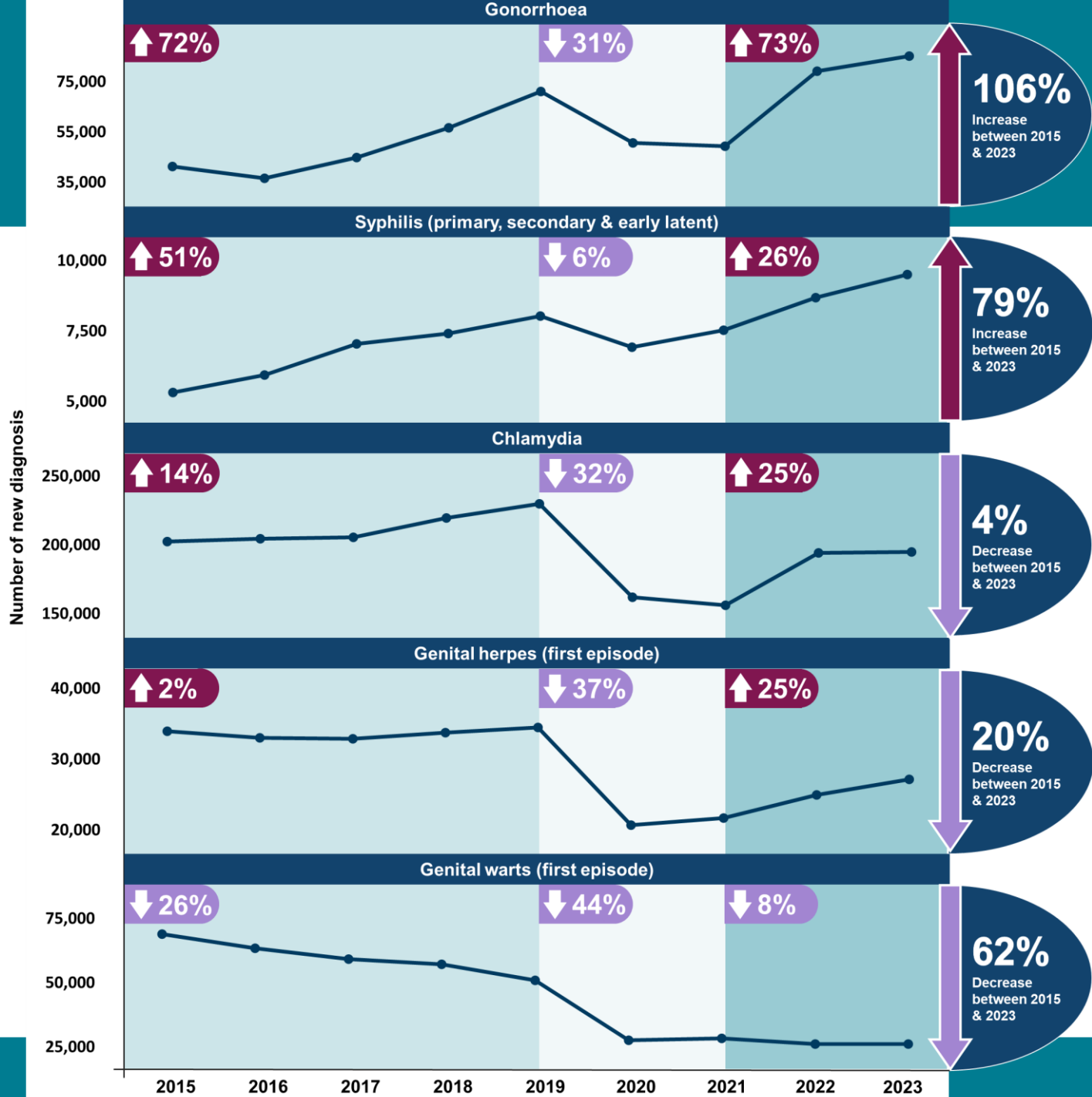


Image courtesy Dr. Caisey Pulford

Data sources: CTAD and GUMCAD



# There were higher STI rates in key populations

The impact of STIs remains greatest in:



**Young  
people**



**People of  
Black  
Caribbean  
ethnicity**

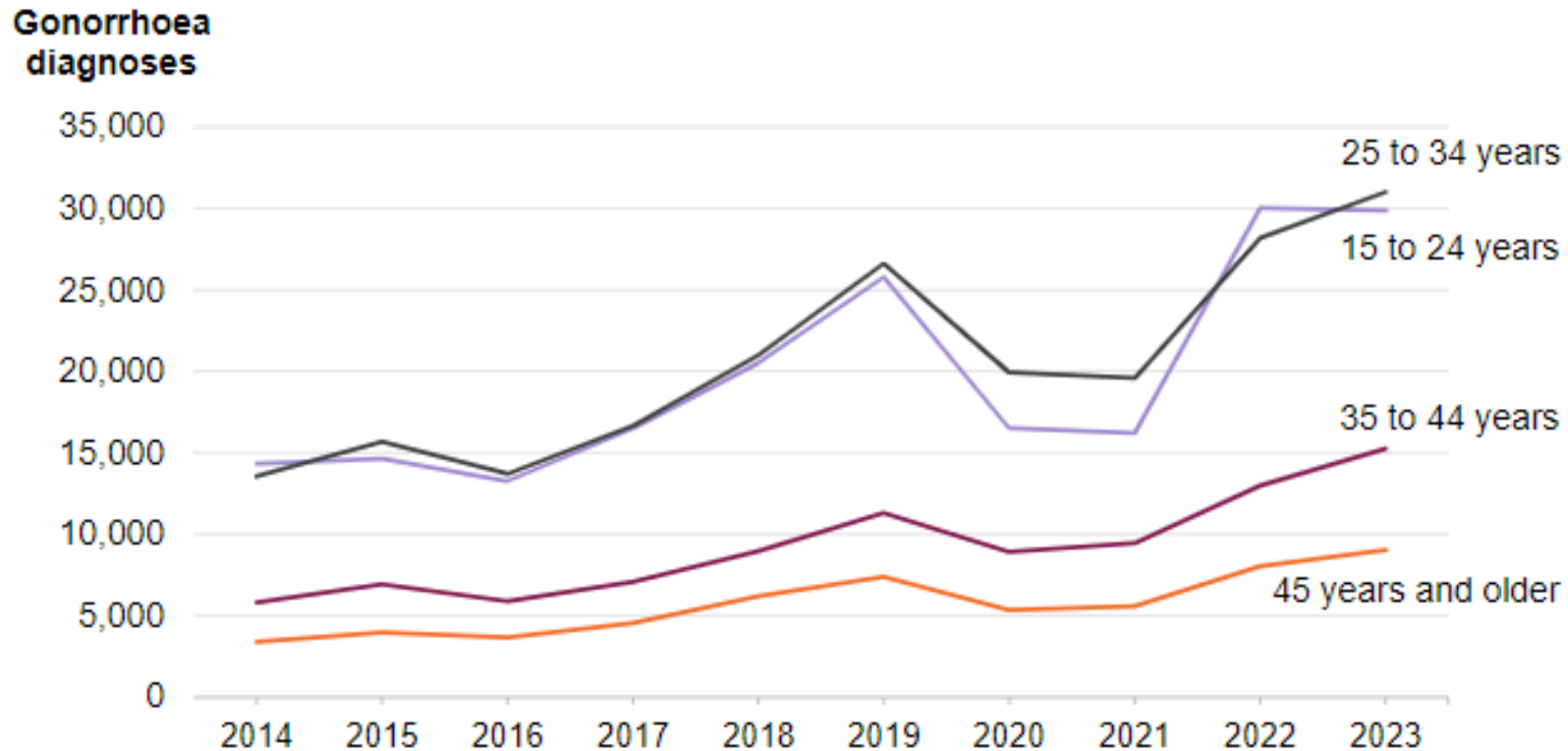


**Gay, bisexual  
and other  
men who  
have sex with  
men**



**People living  
in the most  
deprived  
areas**

# There was a stabilisation of gonorrhoea trends in young people in 2023



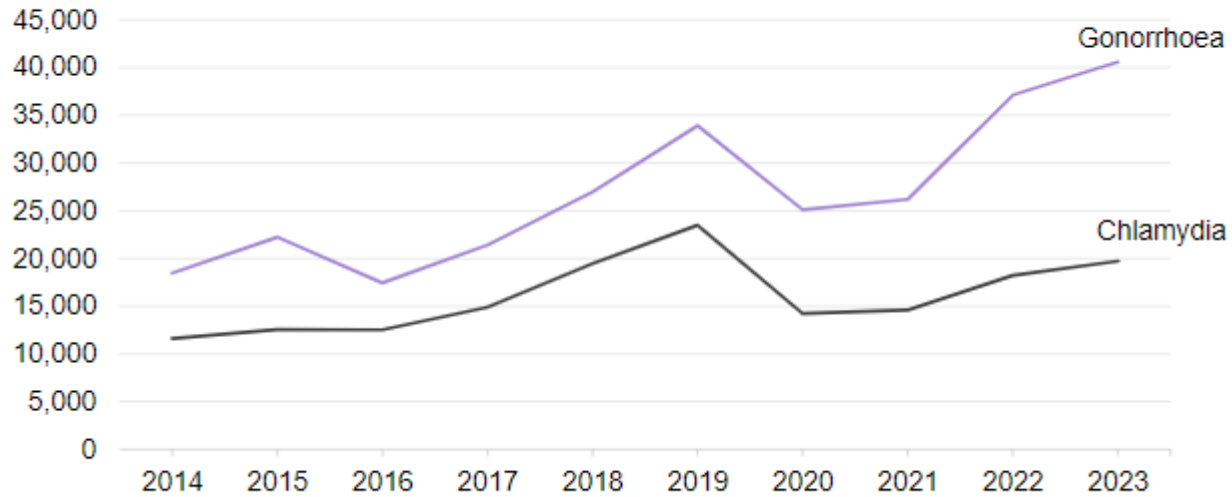
# There were fewer chlamydia tests in young women provided through the NCSP in 2023

Indicator	2022	2023
Total tests	687,197	672,576
Total diagnoses	67,484	64,670
Coverage	20.80%	20.40%
Test positivity	9.80%	9.60%
Detection rate	2,047	1,962

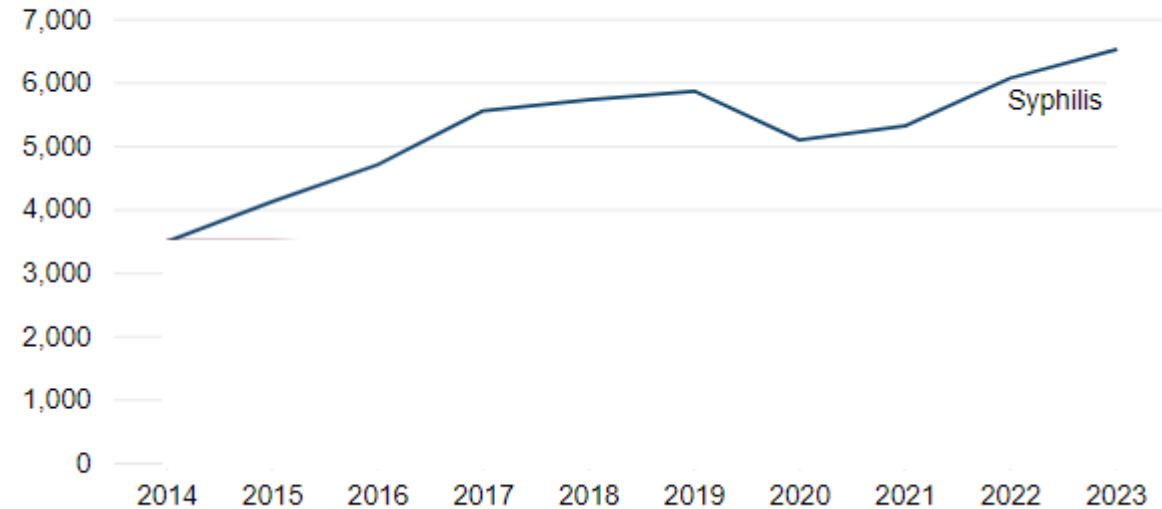


# There have been increases in bacterial STIs in GBMSM

Number of diagnoses



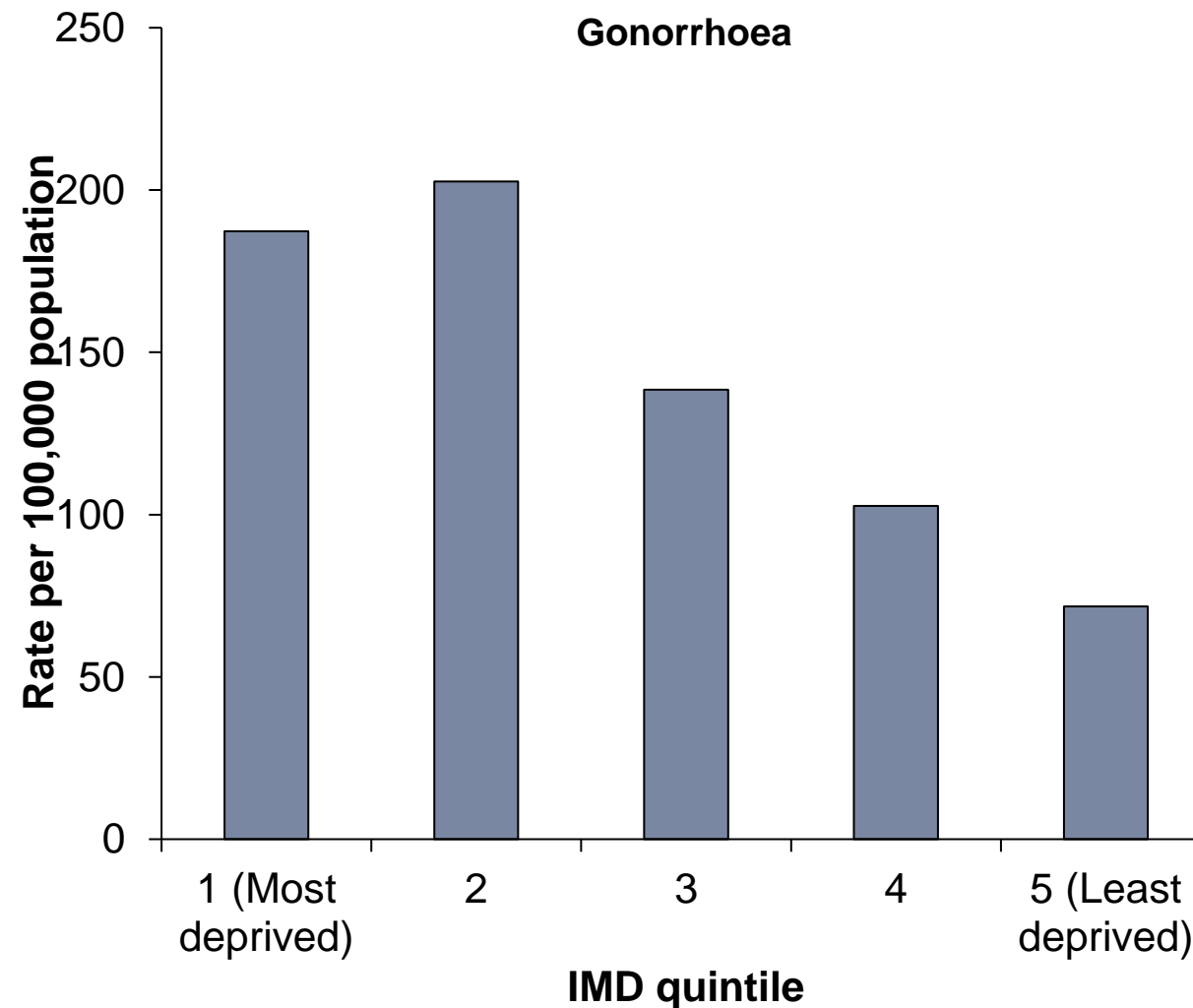
Number of diagnoses



*Different scales are used on the vertical axis of each graph*



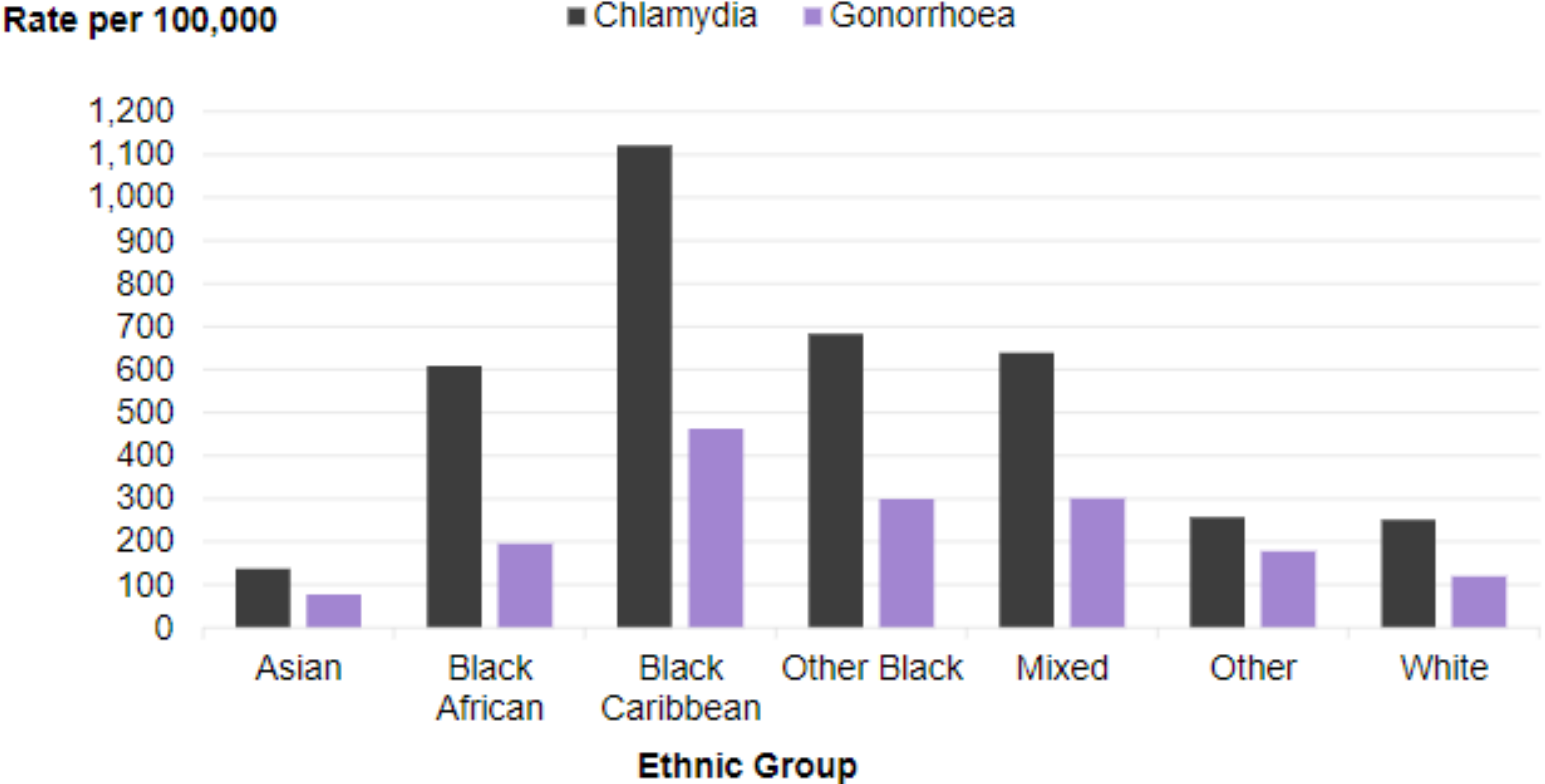
# STI rates were highest among people living in the most deprived quintiles



Data source: [GUMCAD STI Surveillance System](#) data from all local authority commissioned sexual health services in England



# People of Black ethnicities have low numbers of gonorrhoea diagnoses, but high rates



Data source: [GUMCAD STI Surveillance System](#) data from all local authority commissioned sexual health services in England



# Potential drivers of increases in STIs

- **Less condom use**
  - HIV combination prevention (incl. PrEP) and LARC (unplanned pregnancy)
- Changing social norms
  - **Increases in gender and sexual fluidity**
  - **Widespread use of social media and apps to meet partners**
- Changes in the structure and provision of sexual health services
  - **Pressures on services** – increased waiting times and difficulties getting appointments
- Increases in testing (esp. **online**)
  - Online testing scaled up in 2020/21 but there is evidence of **inequity of access**

# Summary

- Of 4.6 million consultations in 2023, **only half were delivered face-to-face**
- Number of sexual health screens in 2023 **increased**
- STI rates continue to be disproportionately higher in **GBMSM, young people, and people of Black Caribbean ethnicity**
- **Larger % increases** in gonorrhoea and syphilis among **heterosexuals**



# Acknowledgements

- All sexual health services and their commissioners
- Stephanie Migchelsen
- Caisey Pulford
- Ana Karina Harb
- Tika Ram
- Katy Sinka
- The GUMCAD Team

# Other data sources

## **STI: annual data**

Data tables, an annual report, and an infographic on trends in STI diagnoses and the provision of sexual health services. Data are provided by various demographic characteristics and by geographic location:

[www.gov.uk/government/statistics/sexually-transmitted-infections-stis-annual-data-tables](http://www.gov.uk/government/statistics/sexually-transmitted-infections-stis-annual-data-tables)

## **National Chlamydia Screening Programme: annual data**

Data on chlamydia tests and diagnoses among 15-to-24-year-olds resident in England:

[www.gov.uk/government/statistics/national-chlamydia-screening-programme-ncsp-data-tables](http://www.gov.uk/government/statistics/national-chlamydia-screening-programme-ncsp-data-tables)

## **Local Authority Sexual and Reproductive Health Profiles**

Interactive maps, charts and tables that provide a snapshot of sexual and reproductive health across a range of infections:

<http://fingertips.phe.org.uk/profile/sexualhealth>

# Other data sources

## **The Gonococcal Resistance to Antimicrobials Surveillance Programme (GRASP)**

Laboratory and clinical data on gonococcal isolates diagnosed in sentinel laboratories:

[www.gov.uk/government/publications/gonococcal-resistance-to-antimicrobials-surveillance-programme-grasp-report](http://www.gov.uk/government/publications/gonococcal-resistance-to-antimicrobials-surveillance-programme-grasp-report)

## **Data: HIV**

Latest HIV surveillance data are available at [www.gov.uk/government/statistics/hiv-annual-data-tables](http://www.gov.uk/government/statistics/hiv-annual-data-tables)

## **Data: Lymphogranuloma venereum (LGV)**

Latest LGV surveillance data for the UK:

[www.gov.uk/government/collections/lymphogranuloma-venereum-lgv-guidance-data-and-analysis](http://www.gov.uk/government/collections/lymphogranuloma-venereum-lgv-guidance-data-and-analysis)

## **Data: *Shigella* spp**

Latest surveillance data on *Shigella* spp in presumptive MSM:

<https://www.gov.uk/government/collections/shigella-guidance-data-and-analysis>