

BRUSH

optimising toothBrushing pRogrammes in nUrseries and ScHools

Peter Day, Zoe Marshman, Kara Gray-Burrows (leads)
with Kristian Hudson, Ellen Lloyd, Sarab El-Yousfi, Tom Broomhead, Hanin El
Shuwihdi & Sam Watt

Funded by:
NIHR ARC Child Health and Maternity Programme

Key message



www.supervisedtoothbrushing.com

The screenshot shows the homepage of the website. At the top left is a circular icon with a person silhouette. To its right is a search bar with the placeholder text "Search..." and a magnifying glass icon. Below these are navigation links: HOME, ABOUT, SUPERVISED TOOTHBRUSHING PROGRAMMES, COMMISSIONERS, PROVIDERS, EARLY YEARS, PARENTS, and CONTACT. The main content area has a dark blue background. It features the BRUSH logo and tagline at the top. Below this is the main heading "The Supervised Toothbrushing Toolkit" in large white text. Underneath the heading is the sub-heading "Supporting supervised toothbrushing programmes to reduce tooth decay in young children" in a smaller white font. The body text explains that the toolkit was developed to bring together new and existing resources to help support the implementation of supervised toothbrushing programmes and clubs. It lists the target audience: commissioners, providers, early years settings, and parents. At the bottom, a small white note states: "**Please note. This website is not yet fully mobile compatible, therefore viewing on a computer is recommended**".

HOME ABOUT SUPERVISED TOOTHBRUSHING PROGRAMMES COMMISSIONERS PROVIDERS EARLY YEARS PARENTS CONTACT

BRUSH
optimising toothbrushing programmes in nurseries and schools

The Supervised Toothbrushing Toolkit

Supporting supervised toothbrushing programmes to reduce tooth decay in young children

This toolkit was developed to bring together new and existing resources to help support the implementation of supervised toothbrushing programmes and clubs. There are resources for those who are responsible for commissioning new programmes (commissioners), for those delivering programmes across a specific area (providers), as well as resources for nurseries, schools or childminders (early years settings) with a Supervised Toothbrushing Programme running and parents whose children are involved.

Please note. This website is not yet fully mobile compatible, therefore viewing on a computer is recommended

Outline



What is a Supervised Toothbrushing Programme / Club

Why

Evidence

Our research

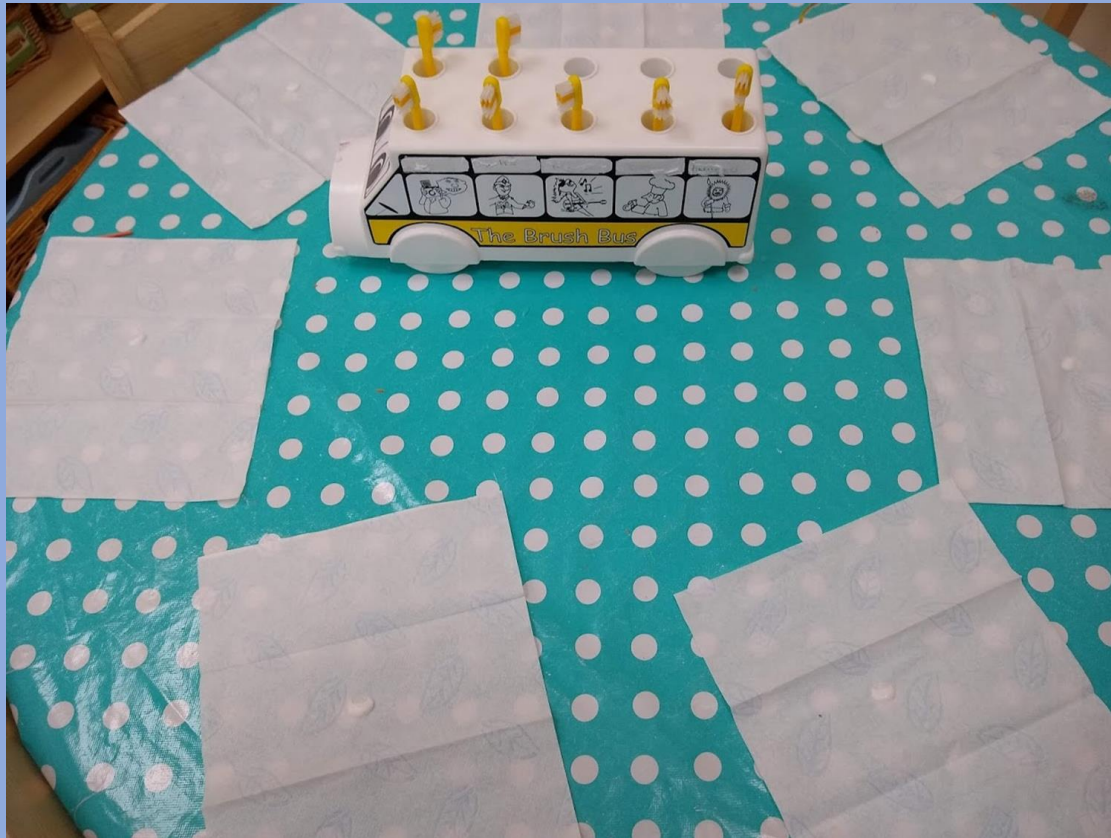
- National surveys 2022, 2024

- Qualitative study

- Co-design and development of implementation toolkit

- Case studies

What is it



STP



Why

BRUSH

optimising toothBrushing pRogrammes in nUrseries and ScHools

“...manifesto commits to the introduction of a supervised tooth-brushing scheme for 3- to 5-year-olds targeting areas of highest need”



Why

BRUSH

optimising toothBrushing pRogrammes in nUrseries and ScHools



Early years foundation stage statutory framework

For childminders

Setting the standards for learning,
development and care for children from
birth to five

Published: 8 December 2023

Effective: 4 January 2024



Development Matters

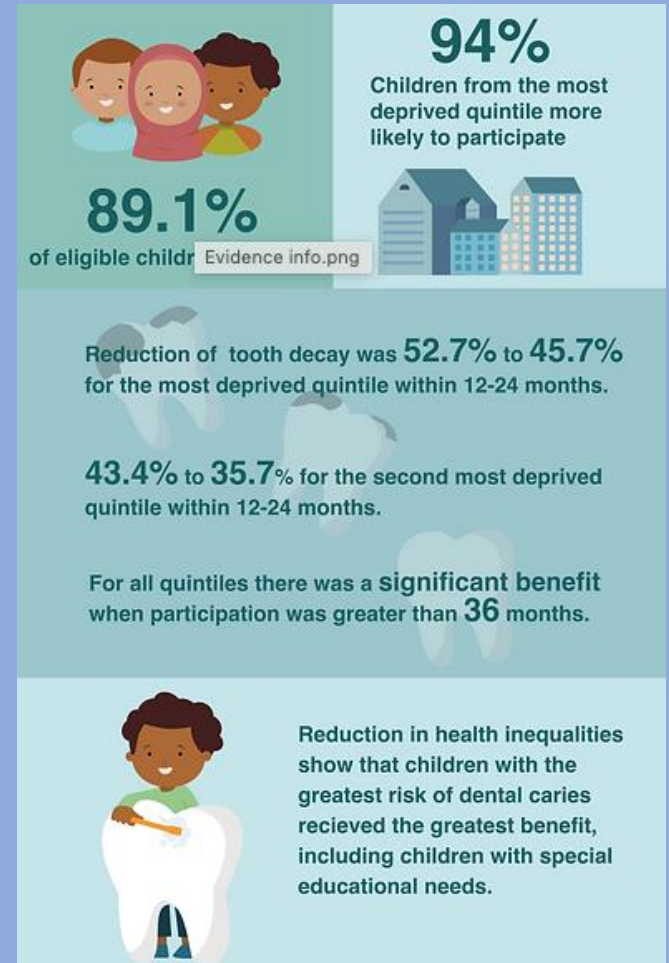
Non-statutory curriculum guidance
for the early years foundation stage

First published September 2020
Revised September 2023



Evidence

Effective
Reduces health inequalities
Cost Effective



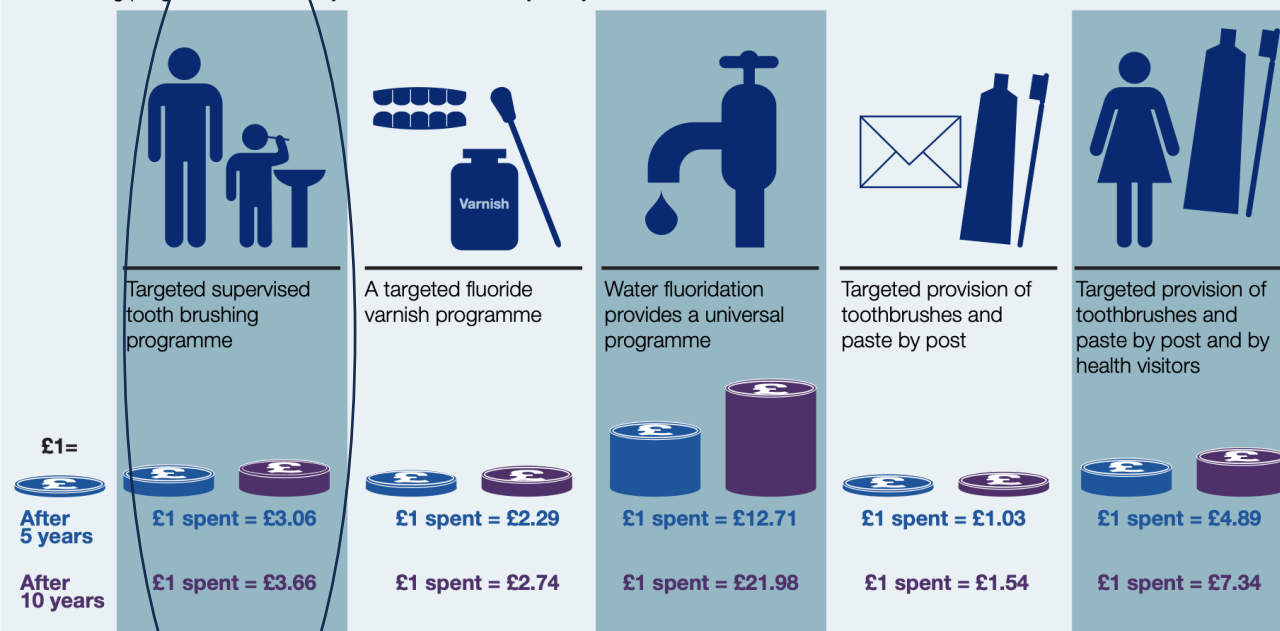
Evidence



Public Health
England

Return on investment of oral health improvement programmes for 0-5 year olds*

Reviews of clinical effectiveness by NICE (PH55) and PHE (Commissioning Better Oral Health for Children and Young People, 2014) have found that the following programmes effectively reduced tooth decay in 5 year olds:

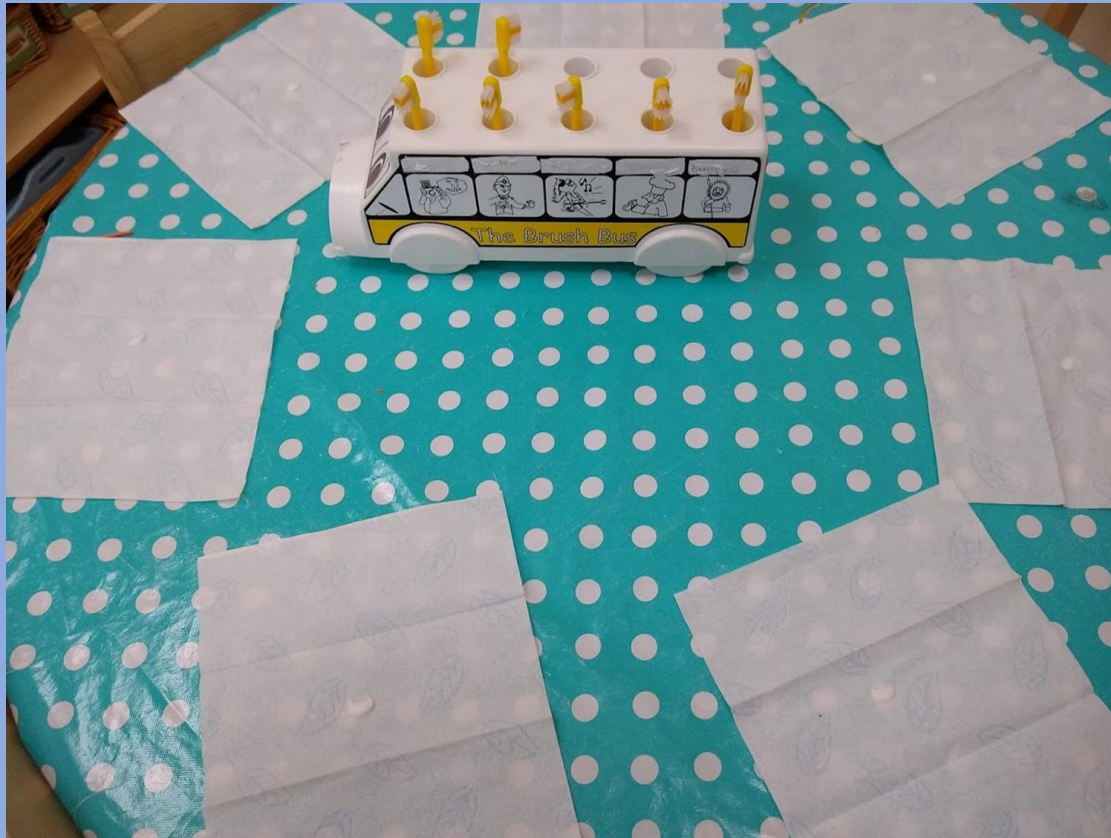


*All targeted programmes modelled on population decayed, missing or filled teeth (dmft) index of 2, and universal programme on dmft for England of 0.8. The modelling has used the PHE Return on Investment Tool for oral health interventions (PHE, 2016). The best available evidence has been used in this tool and where assumptions are made these have been clearly stated

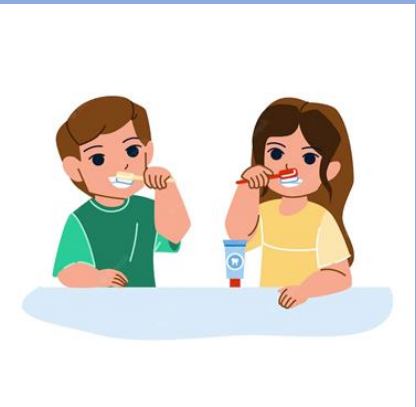
Aim



To explore the variation in toothbrushing programmes across England and identify determinants of implementation to increase uptake, sustainability and impact on oral health.



STP



Key Stakeholders

Commissioners

Providers of STP

Schools/Nurseries

Parents

Children

Delivery models

Funding

Training

Provision

Key Stakeholders

Commissioners

Providers of STP

Schools/Nurseries

Parents

Children

Delivery models

Funding

Training

Provision

STP



Methods



1. Surveys of toothbrushing programmes
2. Qualitative interviews with key stakeholders
3. Co-design and pilot an implementation toolkit
4. Implementation case studies

Methods

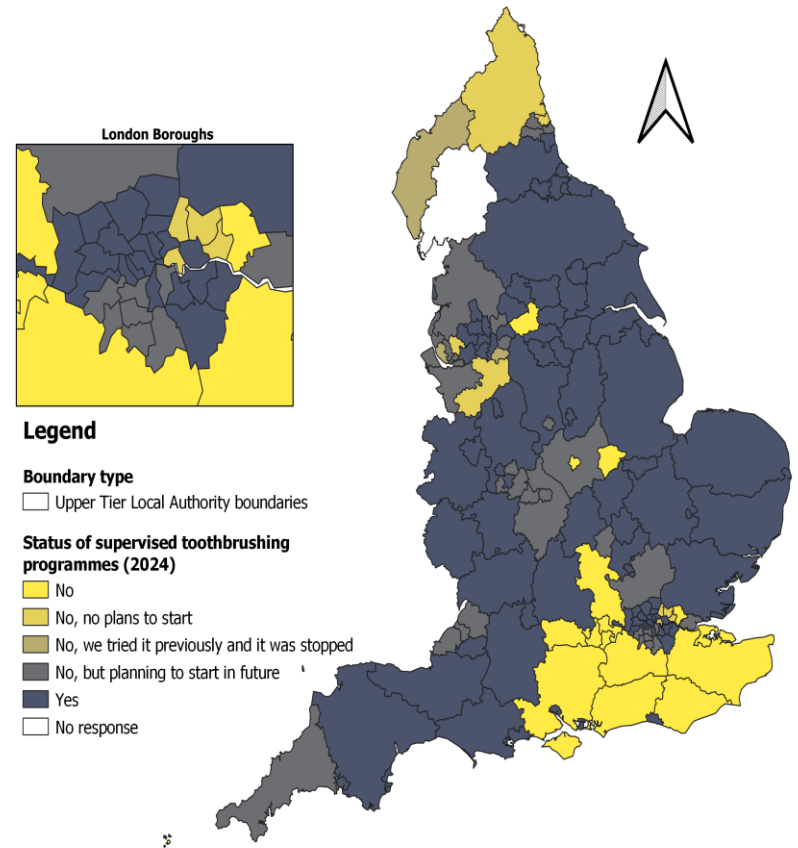
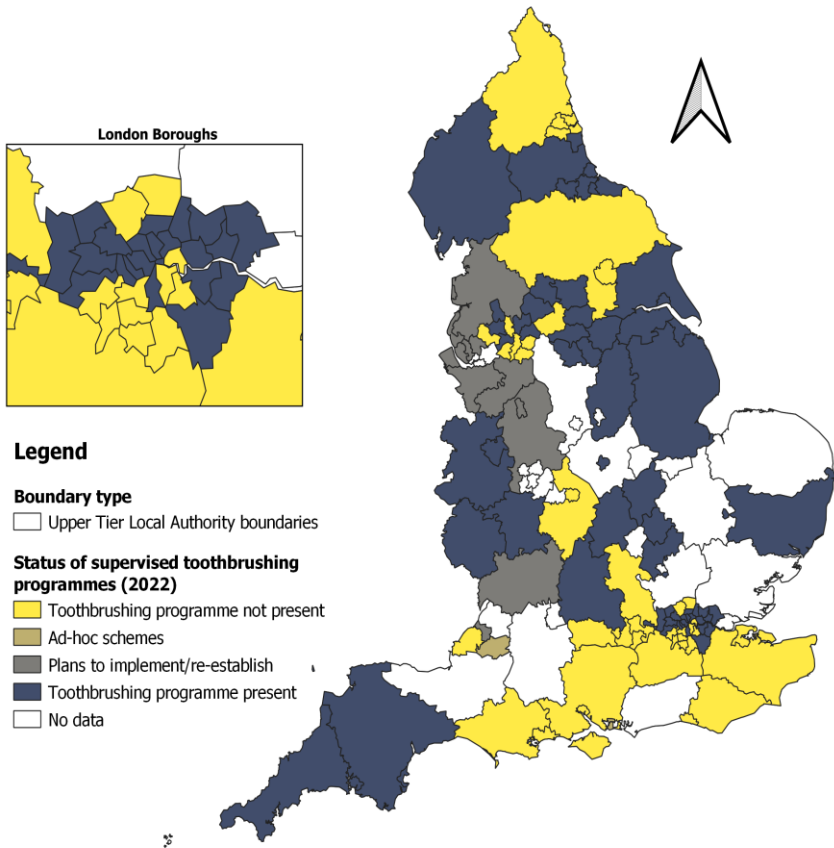
Data comparison

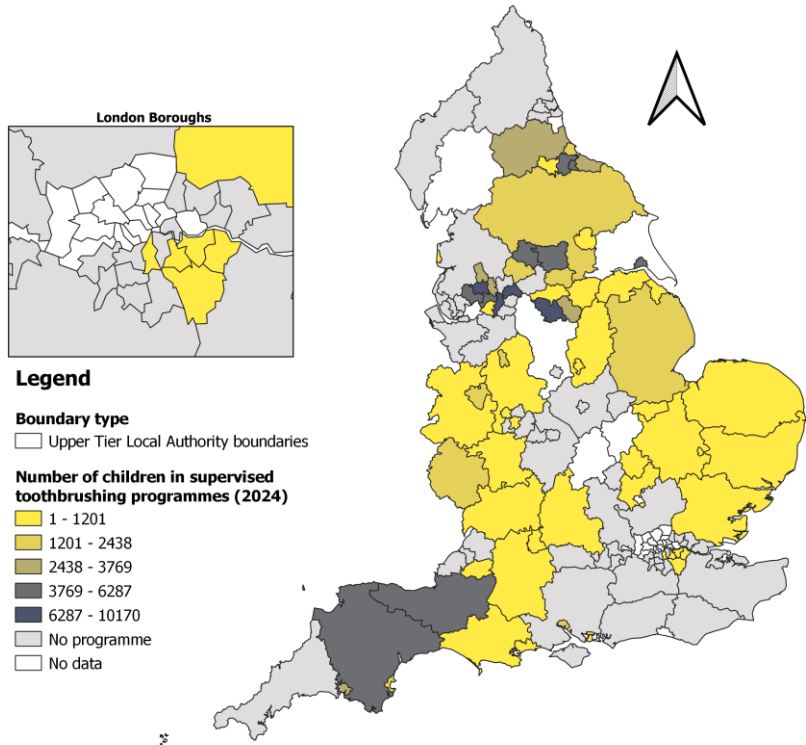
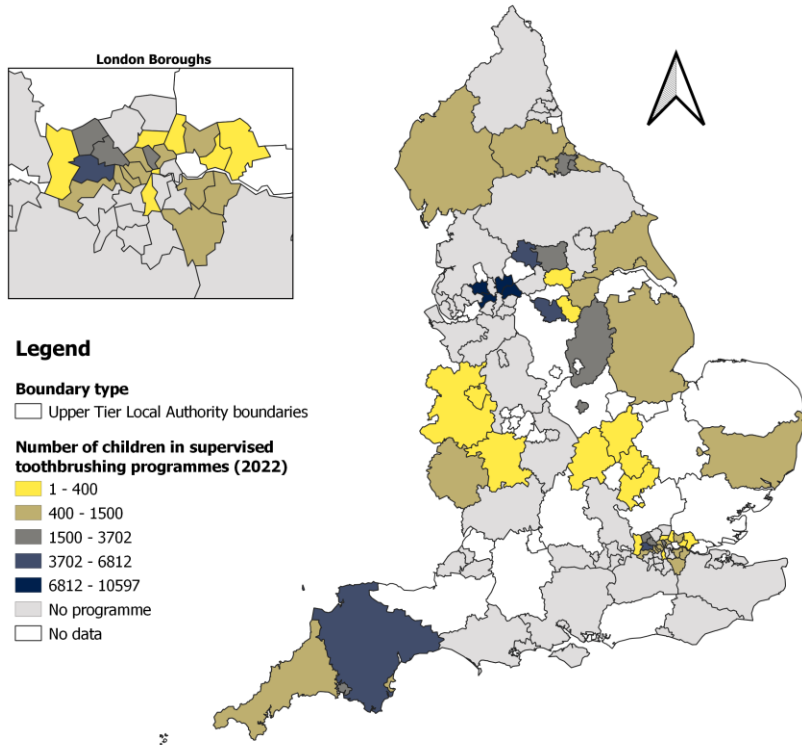
2022 stocktake data – 141 local authorities responded

Number of children in STPs	Number of settings with STPs	'Yes'	'No'	'No, but planning to start in future'	'Used to have a programme'
106,273	2,325	74 (52.5%)	44 (31.2%)	22 (15.6%)	1 (0.7%)

2024 stocktake data – 152 local authorities responded

Number of children in STPs	Number of settings with STPs	'Yes'	'No'	'No, but planning to start in future'	'No, no plans to start'	'No, we tried it previously and it was stopped'
143,200	2,978	90 (59.2%)	18 (11.8%)	33 (21.7%)	8 (5.3%)	3 (2%)





Qualitative interview

- 159 interviews
- Audio recorded, transcribed and framework analysis using CIFR
- Yorkshire and Humber, North-West, North-East, South-West, South-East, West Midlands, East-Midlands and London

Qualitative interview

Key Themes

- Acceptability of STP
- External make or break conditions
- Importance of engagement across the system
- Desire for centralise support



www.supervisedtoothbrushing.com



The screenshot shows the homepage of the supervisedtoothbrushing.com website. At the top left is a circular logo with a person icon. To its right is a search bar with the text "Search..." and a magnifying glass icon. Below these are navigation links: HOME, ABOUT, SUPERVISED TOOTHBRUSHING PROGRAMMES, COMMISSIONERS, PROVIDERS, EARLY YEARS, PARENTS, and CONTACT. The main content area has a dark blue background. It features the BRUSH logo at the top center, followed by the title "The Supervised Toothbrushing Toolkit" in large white text. Below the title is the subtitle "Supporting supervised toothbrushing programmes to reduce tooth decay in young children" in a smaller white font. A paragraph of text follows, describing the toolkit's purpose. At the bottom, there is a small disclaimer: "**Please note. This website is not yet fully mobile compatible, therefore viewing on a computer is recommended**".

HOME ABOUT SUPERVISED TOOTHBRUSHING PROGRAMMES COMMISSIONERS PROVIDERS EARLY YEARS PARENTS CONTACT

BRUSH
optimising toothbrushing programmes in nurseries and schools

The Supervised Toothbrushing Toolkit

Supporting supervised toothbrushing programmes to reduce tooth decay in young children

This toolkit was developed to bring together new and existing resources to help support the implementation of supervised toothbrushing programmes and clubs. There are resources for those who are responsible for commissioning new programmes (commissioners), for those delivering programmes across a specific area (providers), as well as resources for nurseries, schools or childminders (early years settings) with a Supervised Toothbrushing Programme running and parents whose children are involved.

Please note. This website is not yet fully mobile compatible, therefore viewing on a computer is recommended



About

Learn about the BRUSH (optimising toothBrushing pRogrammes in nUrseries and ScHools) project.



Supervised Toothbrushing Programmes

This section covers what they are, their impact on oral health, effectiveness and cost-effectiveness, and geographical areas running throughout England.



Information for Commissioners

This section describes the implementation activities for those considering commissioning a supervised toothbrushing programme.



Information for Providers

This section describes some of the implementation activities that providers of a supervised toothbrushing programme will have to undertake.



Information for Early Years

Top tips and resources for delivering a supervised toothbrushing club as well as some tips on raising awareness and engaging families.



Information for Parents

In this section, we provide helpful tips for parents to promote toothbrushing at home.



www.supervisedtoothbrushing.com

- Total visitors: 10,595
- Unique visitors: 7,204
- Countries: visitors from 59 countries, mainly from the UK, followed by the USA, Australia, India, and Ireland.
- Requests for further information: 93 requests
- Website subscribers: 90 people

Next steps

- Case Studies
- Third survey due in January 2025
- Development of website content to address gaps identified by users



A country that works for all
children and young people

An evidence-based plan for
improving children's oral health with
and through education settings

