

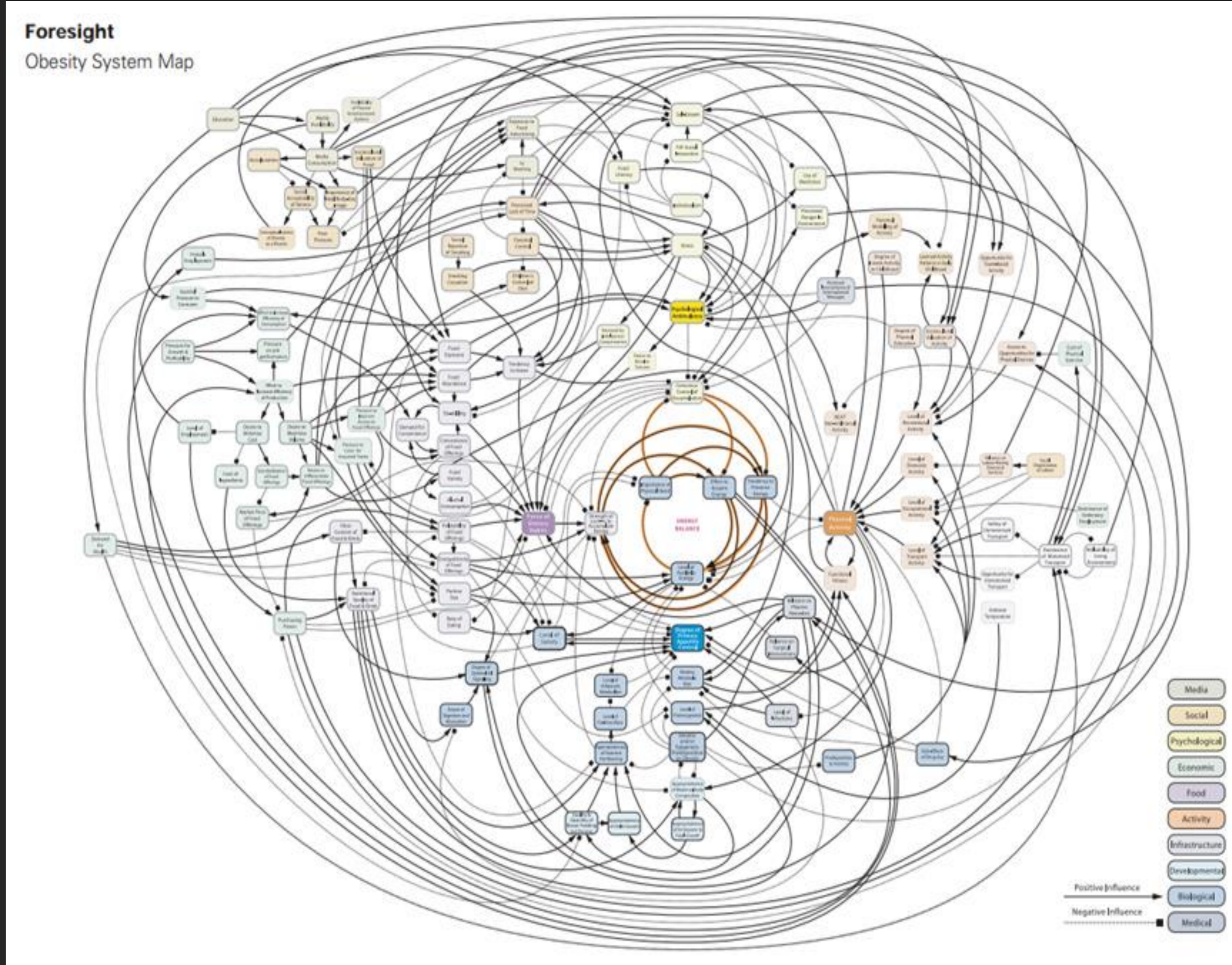


## Creating an Equitable Pathway for Planning for Health in East Sussex:

**“Preparing for the  
Future: Putting it into  
practice”**

Lourdes Madigasekera-Elliott -  
Public Health Strategic Lead

East Sussex County Council



It's a complex set of systems...



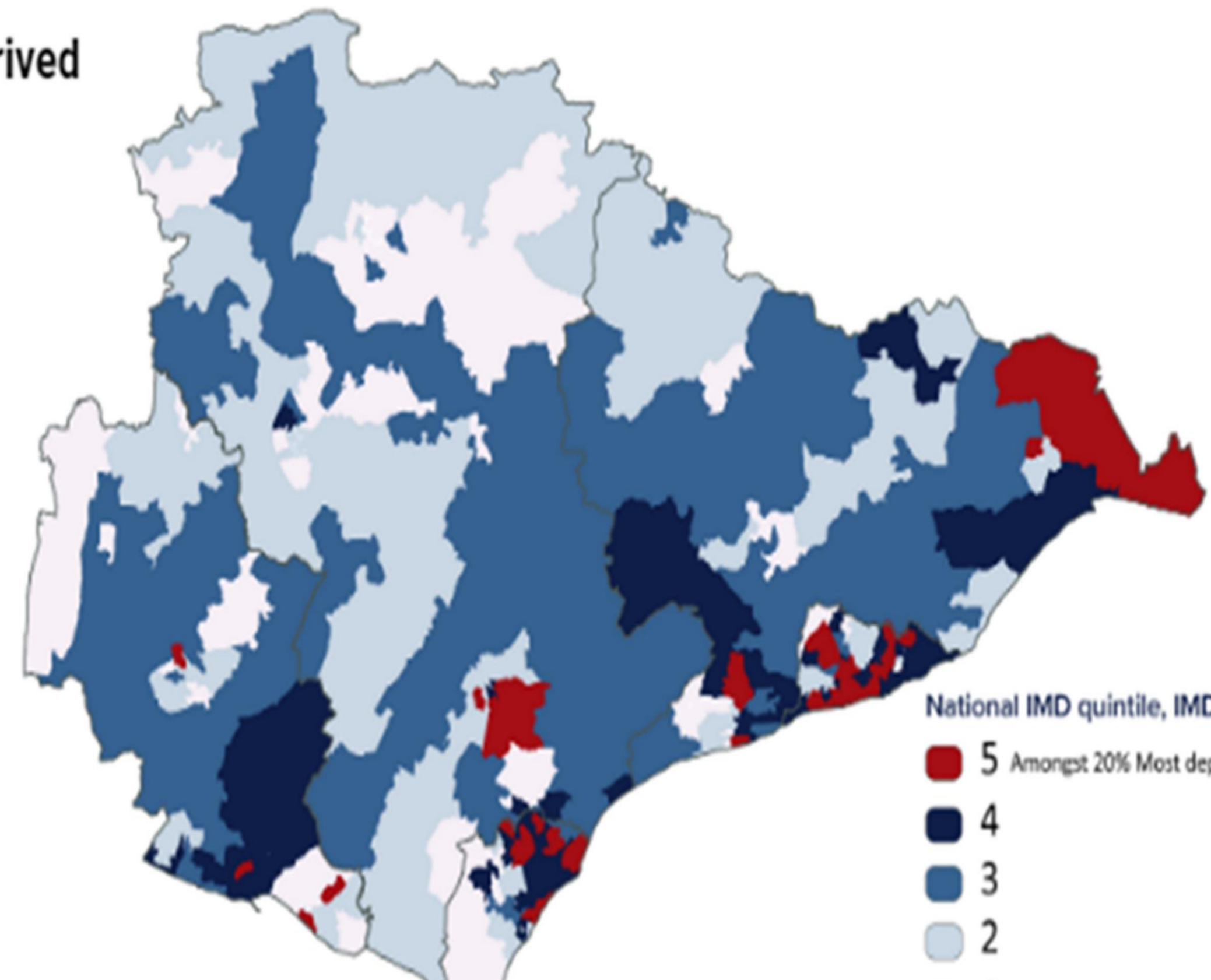
# Local situation and priorities for East Sussex

East Sussex is 5th most deprived of 26 county councils

Where are the most deprived LSOAs

Eastbourne	26%
Hastings	49%
Lewes	4%
Rother	13%
Wealden	9%

14% are in most deprived quintile



## The Local Picture ...

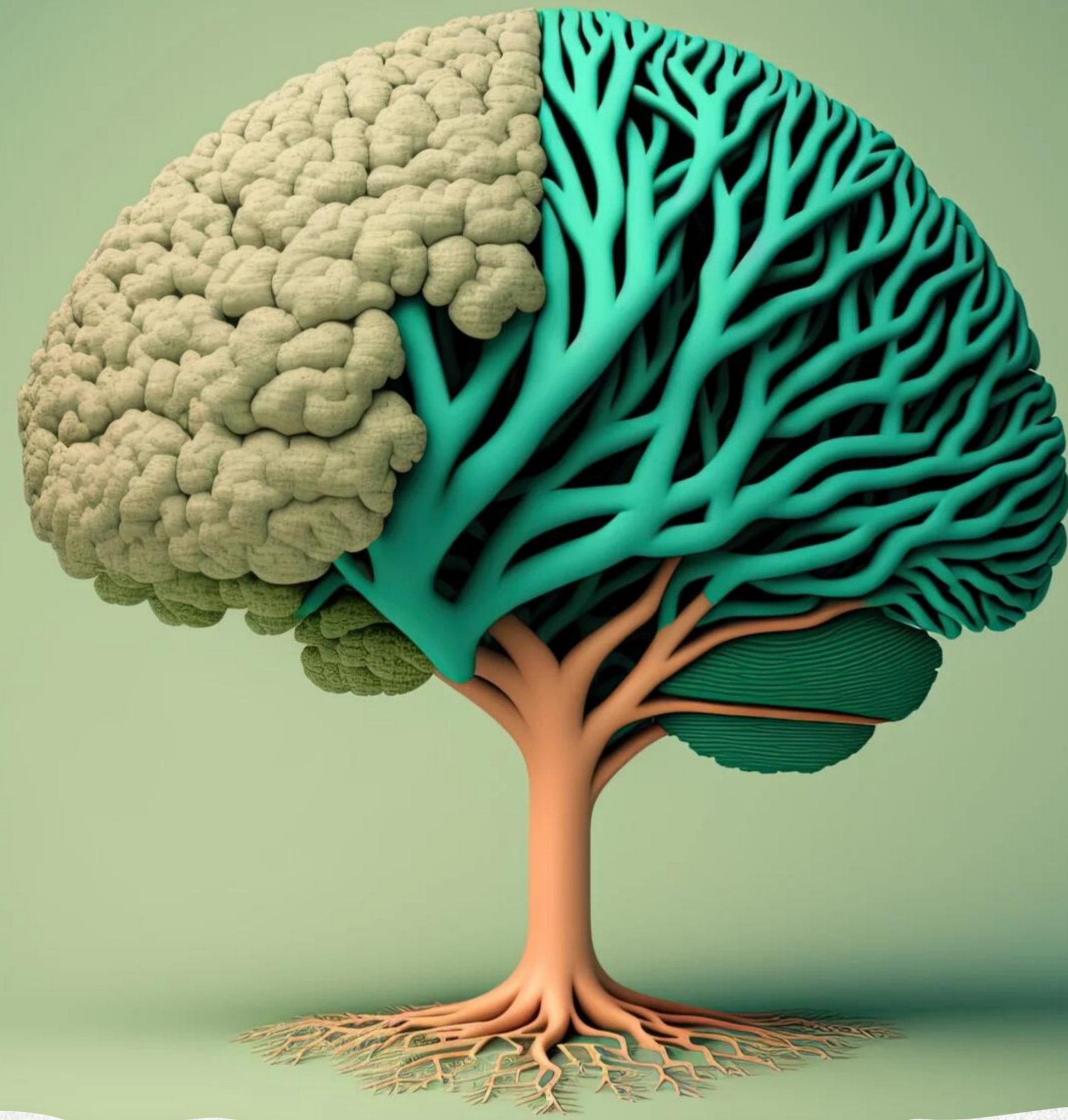
**How can public  
health contribute to  
planning for health?**

---



**We are THE Fellowship!**





Can you  
prove it

A hand holding a black marker, writing the text 'Can you prove it?' on a white surface. The hand is positioned on the right side of the frame, with the marker tip touching the surface. The text is written in a cursive, handwritten style. The background is a plain, light gray.

Evidence and Intelligence

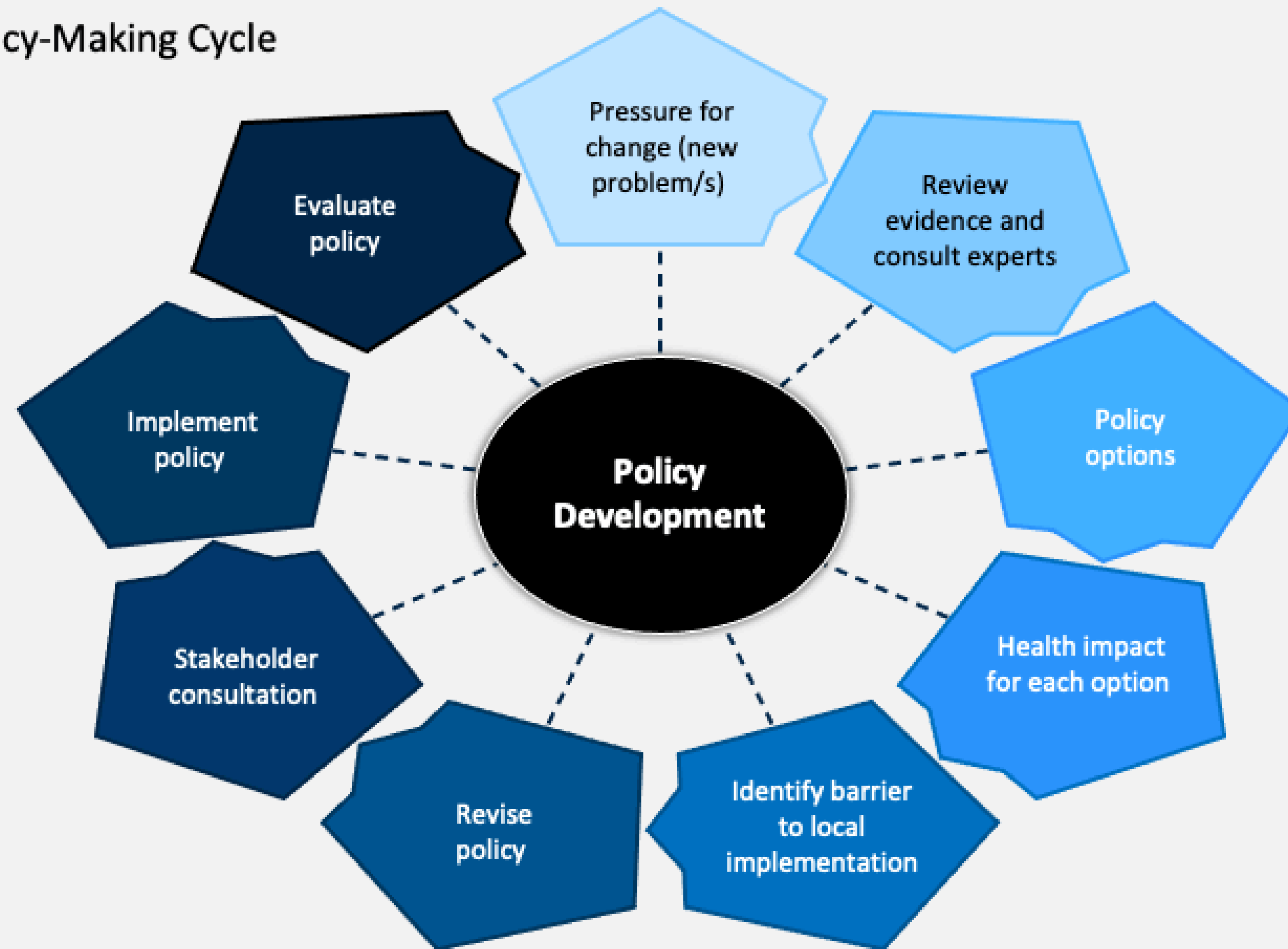
# Guidance





# POLICY DEVELOPMENT

## Policy-Making Cycle



right for what is thou  
relation or from any  
point of view.

**Confidence**

trusting relationsh  
stability, or veracit  
or certainty of a pr  
for what is th



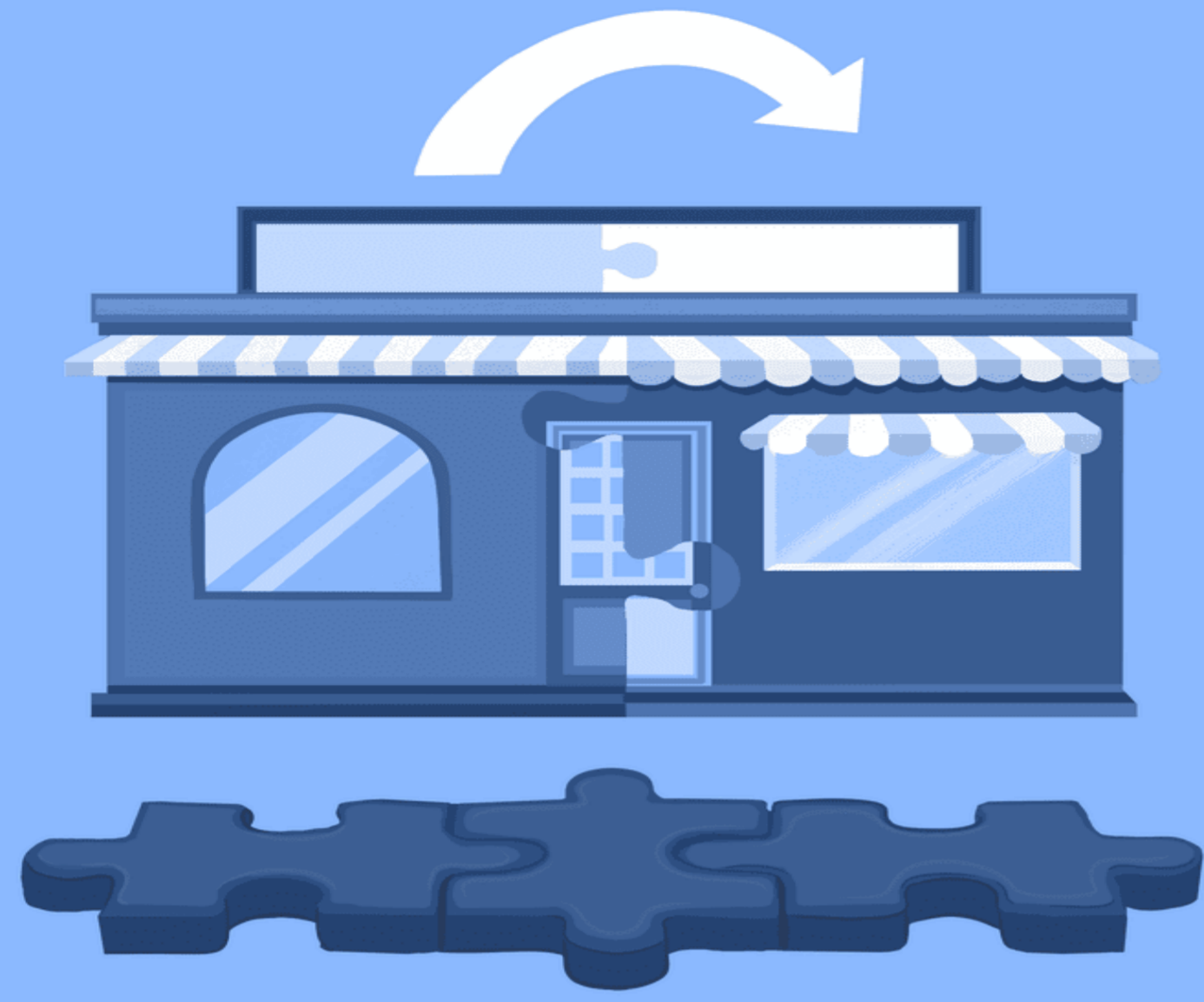


Challenges....

Don't have to be challenging....!



leading  
without  
authority



## Synergy

*['si-nər-jē]*

The concept that the value and performance of two companies combined will be greater than the sum of the separate individual parts.

 Investopedia

## The Ripple Effect



ONE SMALL CHANGE  
CAN HAVE AN ENORMOUS IMPACT





**BACK  
TO  
THE FUTURE**

# The Equitable Pathway for Planning for Health

## Stage 1: Identify and Build

### Identify **needs** and Build **relationships**:

- + Who are the key contacts in Local Planning Authorities
- + Identify 'District & Borough local' Health & Wellbeing priorities & issues
- + Deliver HIA training to build confidence and make the argument for embedding in Local Plans

## Stage 2: Establish

### Establish **ways of working**:

- + Kick off with a workshop to bring the partners together
- + Develop a memorandum of understanding (MOU) between public health and planning
- + Working Group – to co-develop policies, processes and tools
- + Agree roles, responsibilities and accountabilities

## Stage 3: Influence

### Influence **the system**:

- + Input into Local Plan development
- + Respond to planning applications consultations
- + HIA requirement
- + Developments which maximise health and wellbeing benefits
- + Influence health outcomes

# East Sussex Public Health and Planning Memorandum of Understanding (MOU):

Overarching agreement and intention to work together countywide to improve the health and wellbeing of residents and places



Signed by Public Health and all Local Planning Authorities.



Provides the policy context and links between planning and health.



Sets out how we will work together fulfilling the duty to cooperate.



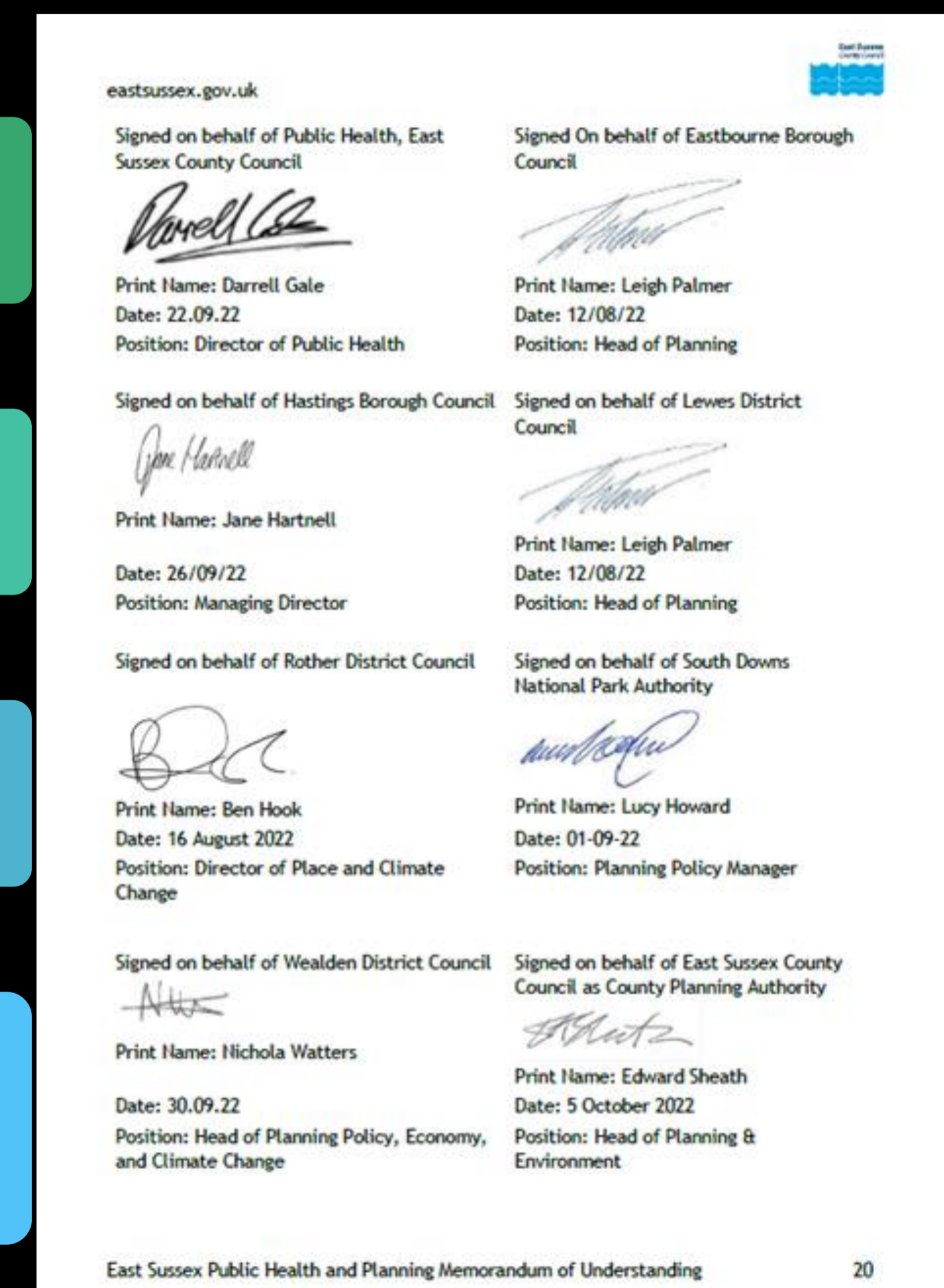
High level actions that Public Health and Local Planning Authorities will do.



Action to work together to agree specific actions on processes and engagement to establish robust working outcomes and objectives.



Builds consistency, consensus and mutual understanding across the county.





And .....So what  
you got an MOU?

---

Preparing for the Future: Putting it into practice

# East Sussex Planning for Health Working Group

## Aims:

- Proactively embed and support the development of approaches to deliver 'Planning for Health'.
- Be responsible and accountable for the delivery of the MoU.

## Improves health outcomes and tackles health inequalities by:

- Building skills, capacity and knowledge.
- Providing direction, support and delivery.
- Co-developing guidance and templates.
- Strengthening consideration of health and wellbeing in plan-making and planning decisions.

# Engagement and Process Protocols (EPPs)

Helps to deliver against  
the MOU

Individual agreements  
between Public Health  
and Local Planning  
Authorities (LPA).

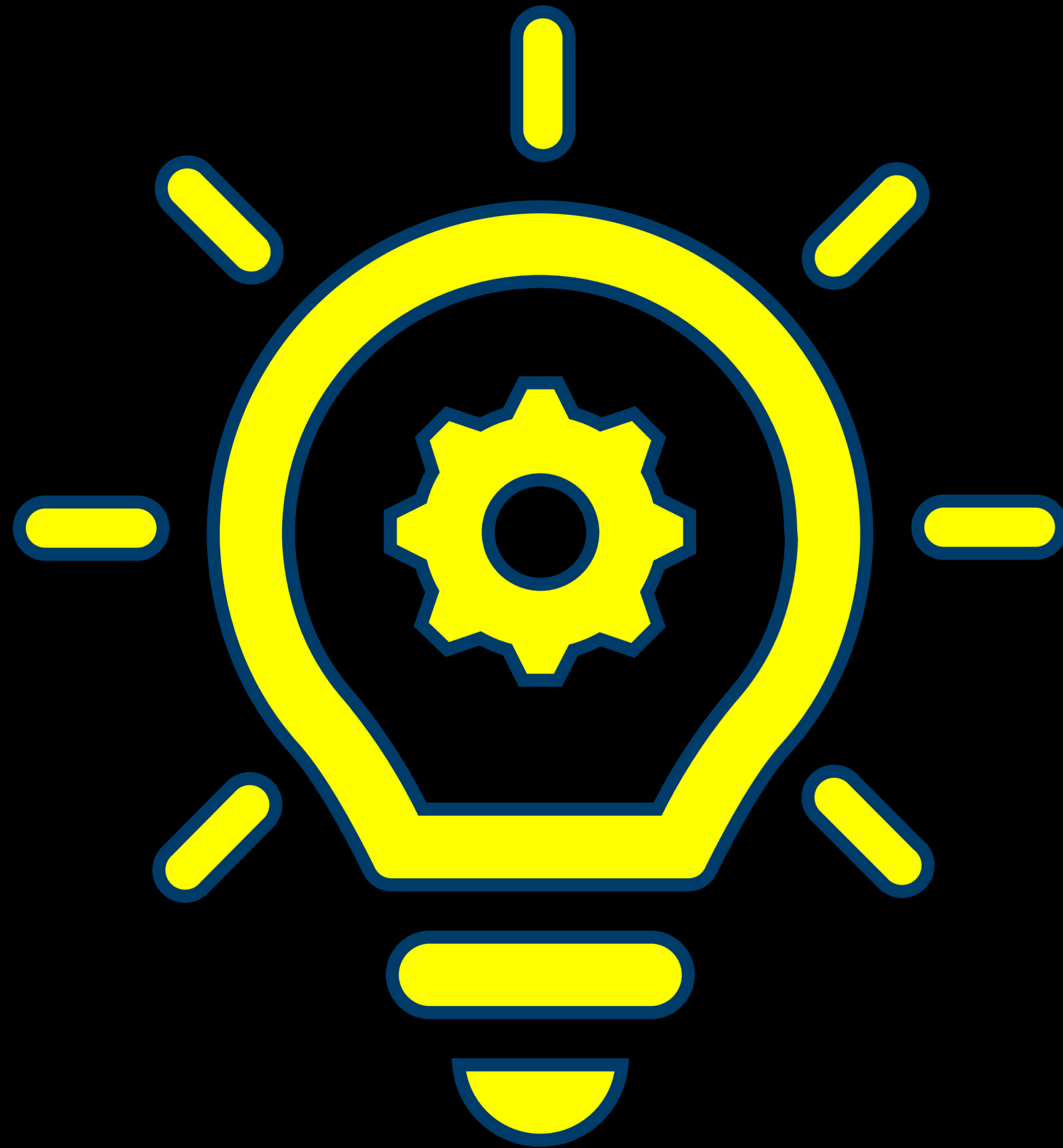
Details on working  
relationships,  
processes, engagement,  
roles and  
responsibilities.

Thresholds for  
consulting Public Health  
on applications and HIA  
requirements.

Overarching consistent  
county approach but  
not one size fits all.

Specific details reflect  
LPA differences,  
thresholds and triggers  
focused on health  
priorities and  
inequalities.

# East Sussex Health Impact Assessment (HIA) Guidance Toolkit



- Co-develop guidance, tools and templates to assist planners, public health and developers
- Appropriate and proportionate for the level and types of development anticipated
- To include:
  - Process maps
  - Checklist for screening, scoping and assessments
  - Health considerations and priority tables
  - Quality Assurance Review Framework

# NIHR - National Institute for Health and Care Research

**NIHR** | Public Health Intervention  
Responsive Studies Teams

PHIRST aims to provide timely and accessible evaluations of public health interventions to local authorities.



- [Healthy environments LA briefing final \(nihr.ac.uk\)](https://www.nihr.ac.uk)
- Building and facilitating system capability to create healthy environments in East Sussex and Southampton: a qualitative process evaluation
- Study aims: To identify any changes in knowledge, skills and ways of working that support efforts to promote healthy environments in local authority settings that can be linked in whole or in part to the investment in specialist dedicated posts.
- Recommendation: To achieve a shared responsibility, **investment is needed in professional development for both planning & public health professions.**

# Thank you!



Lourdes Madigasekera-Elliott  
- [Lourdes.Madigasekera-  
Elliott@eastsussex.gov.uk](mailto:Lourdes.Madigasekera-Elliott@eastsussex.gov.uk)