



SURREY
COUNTY COUNCIL

Surrey's Greener Future

Surrey's response to the Climate Crisis

Three points of reflection

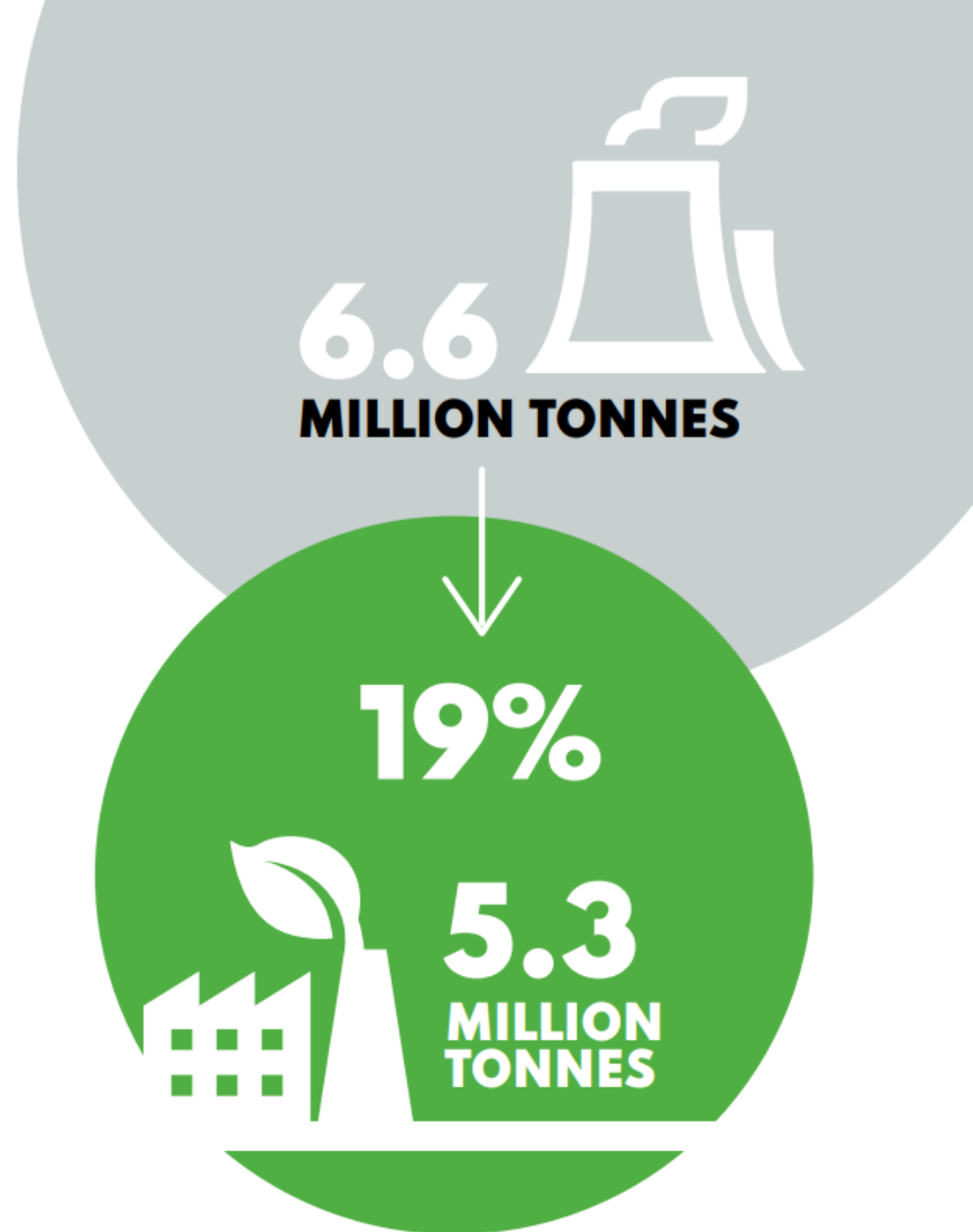
- (1) Household Retrofit:** Forming partnerships to mobilise action.
- (2) Procurement:** Emission reduction alongside service delivery.
- (3) Use of Data:** Reaffirm commitment and improve the programme.

About Surrey's climate journey

2019: Climate emergency

2020: Strategy

2021: Delivery Plan



Household retrofit



SURREY
COUNTY COUNCIL

Surrey's
Greener
Future

About Surrey Homes

Mix of rural and urban

1.2M residents

0.5M households

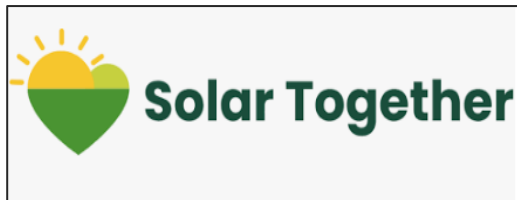
8.3% Fuel Poor



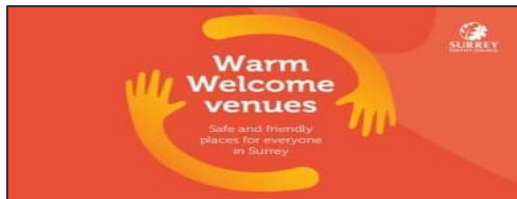
Live Retrofit Projects



Grant Delivery (LAD/ HUG): £0.85M annual bill savings from the retrofit of 1264 homes.



Solar Together: £1.3M annual bill savings from 2177 solar together homes.



Warm Welcome Services: 64k warm welcome visitors, 9,000 winter essentials, £30k fuel vouchers



Local Energy Advice Demonstrator : 600 free home energy surveys, a retrofit one stop shop and retrofit guide.

Retrofit partnerships



SURREY
COUNTY COUNCIL

Warm up, chat and enjoy a free hot drink

Warm welcome venues across Surrey offer a safe warm space, a hot drink and some activities for free.



Warmth Matters



Help with your Energy Bills

ZERO 
carbon guildford



Our first customer installing her discounted loft insulation ready for winter.

Surrey Climate SO Commission




**Surrey Fire and Rescue Service
Safe & Well visits**



SGN
Your gas. Our network.



Department for
Energy Security
& Net Zero



Greater
South East
Net Zero Hub

Next steps – how to scale up?

Improve referrals between services: subsidised green skills training

Expand services available: loft clearances

Retrofit strategy: and funding bid to scale up

Procurement



SURREY
COUNTY COUNCIL

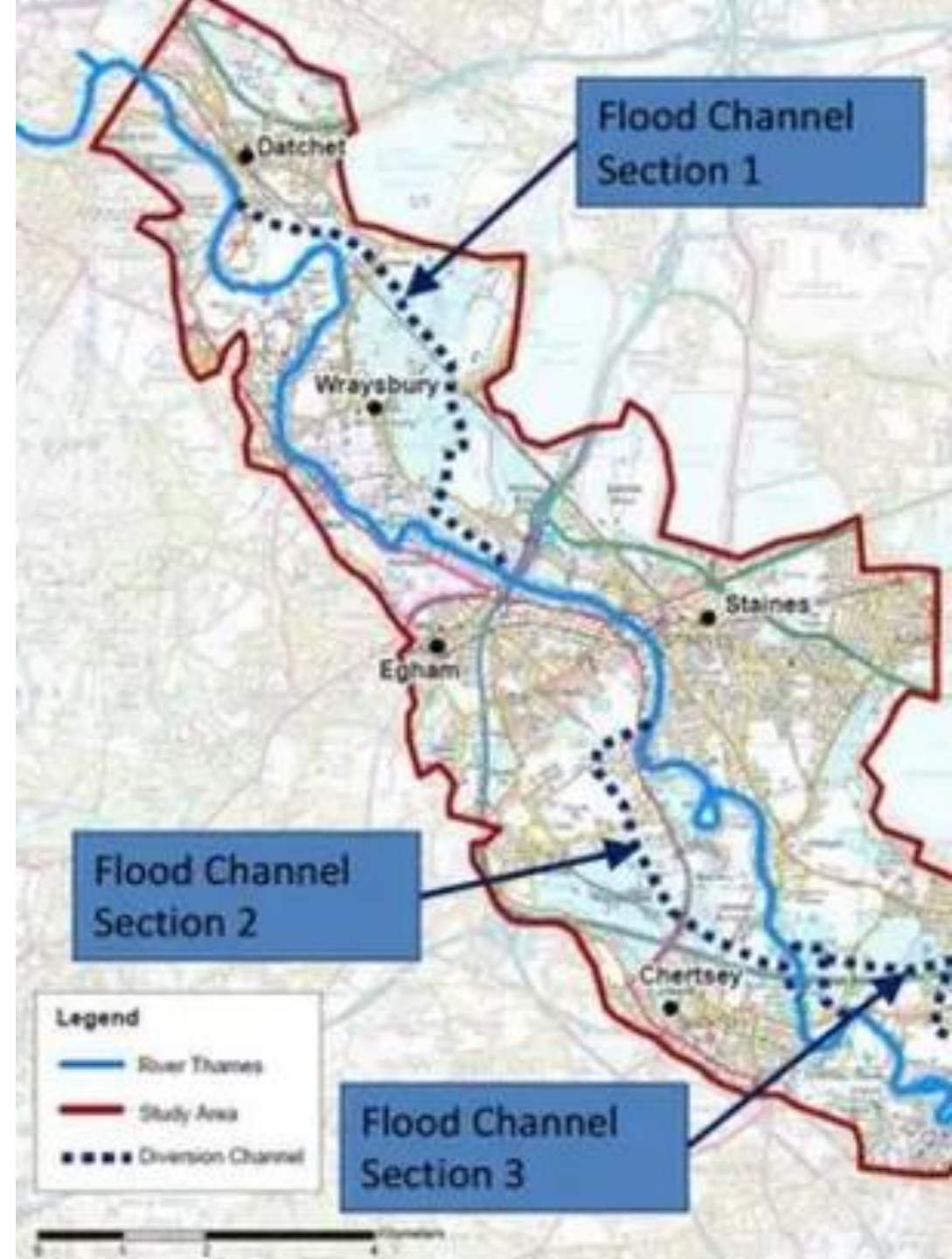
Surrey's
Greener
Future

About Council procurements

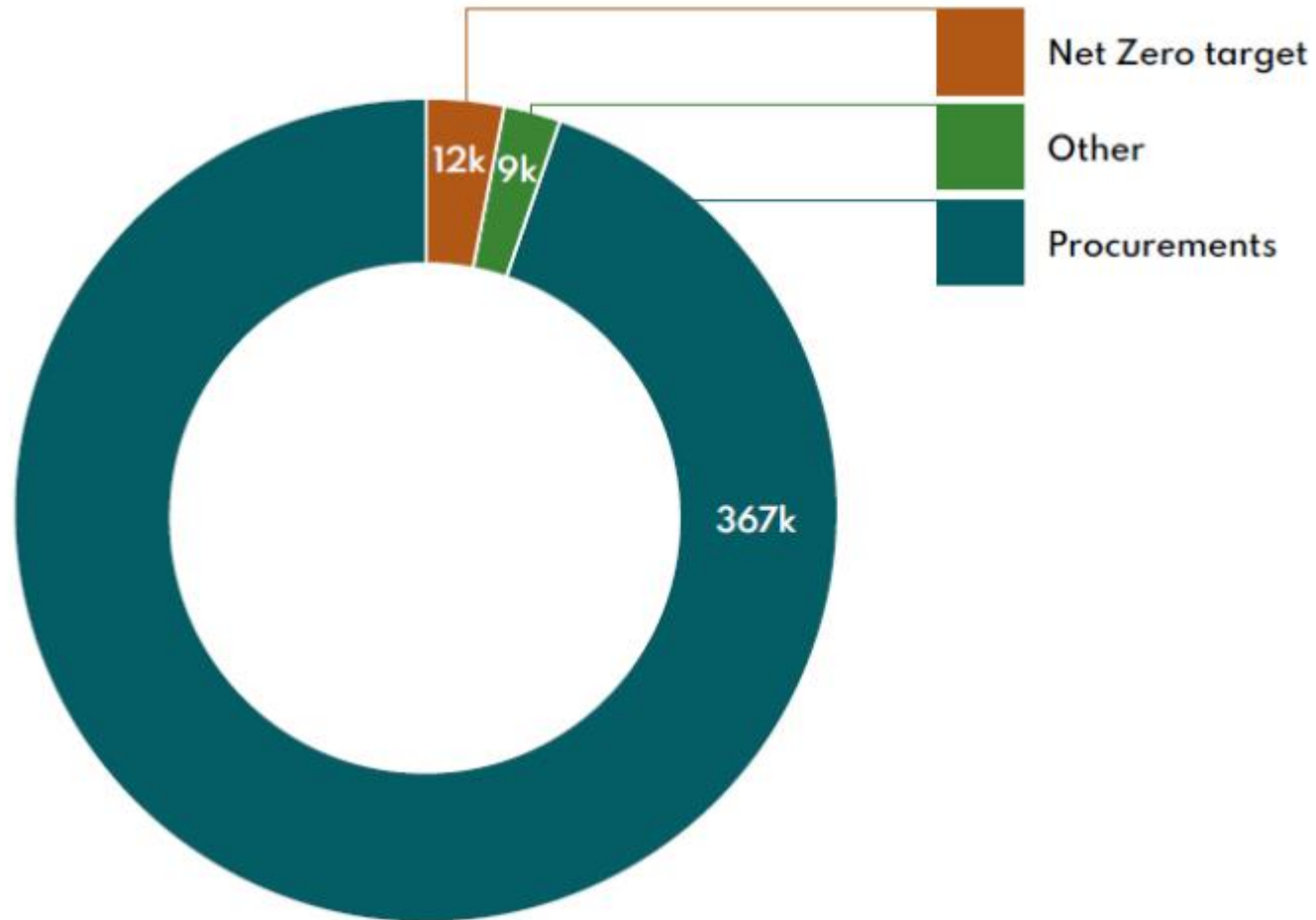
Shared service: East Sussex, Surrey and Brighton and Hove

Many providers: in the thousands

High spend: around £900M per year



Surrey County Council's total carbon impact (tCO2e)



Sustainable procurement policy

Climate change mitigation and adaptation

Prevention of pollution

Sustainable Resource use and consumption

Protection and restoration of biodiversity

Extra Care Independent Living

725 supported living homes

Used “LETI” standards

Small cost uplift

Residents have no or low energy bills

Very low carbon



Next steps – how to measure progress?

Scope 3 target?

Increased use of carbon calculator tool

Catch carbon savings at an earlier opportunity

Use of data



**Surrey's
Greener
Future**

What do we need to know?

Are we on track to meet net-zero?

What is the progress of the projects?

How does the plan add value?

Tracking net-zero

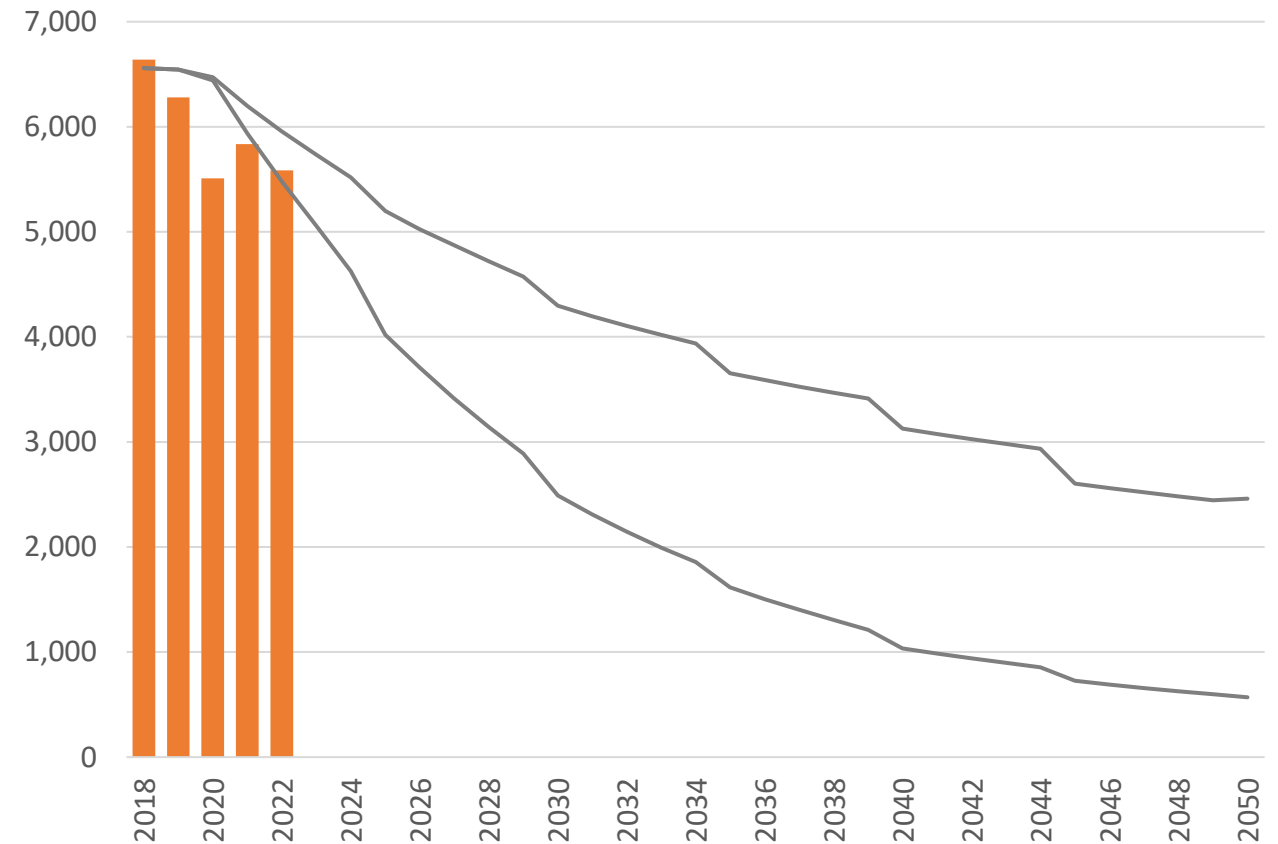
SCATTER carbon pathway

Compare to DESNEZ data

Extrapolate sector-level targets rates of change

Make it easy to understand

Surrey's Emissions (ktCO₂e)



Progress of projects

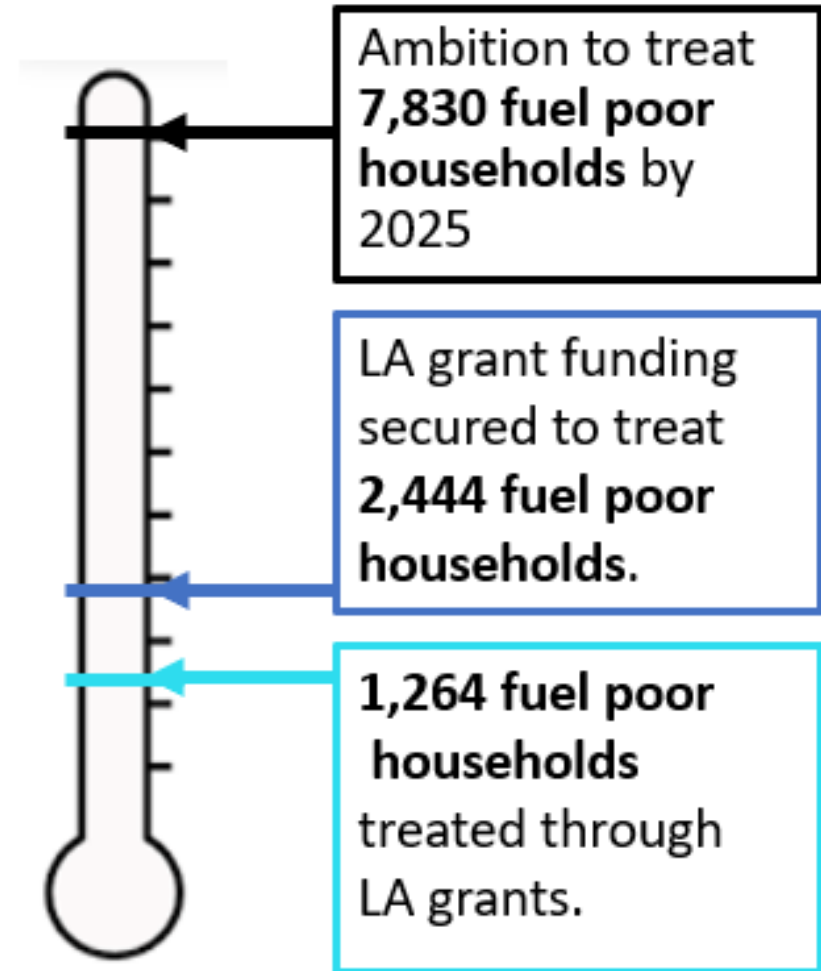
Project-level indicators

Set future ambition

Compare with what needs to happen

How to fill the gap?

More funding needed to increase LA impact

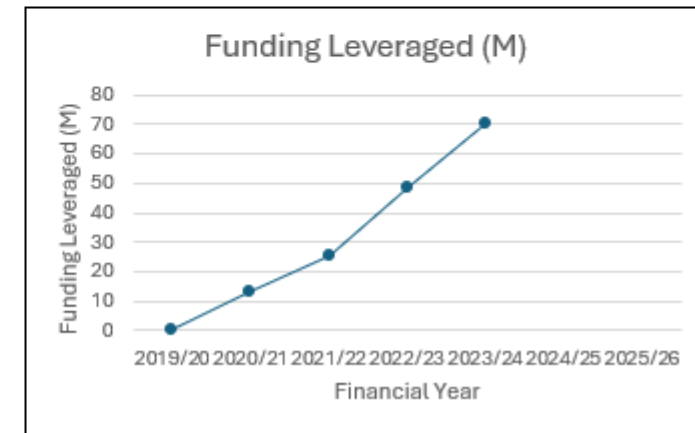
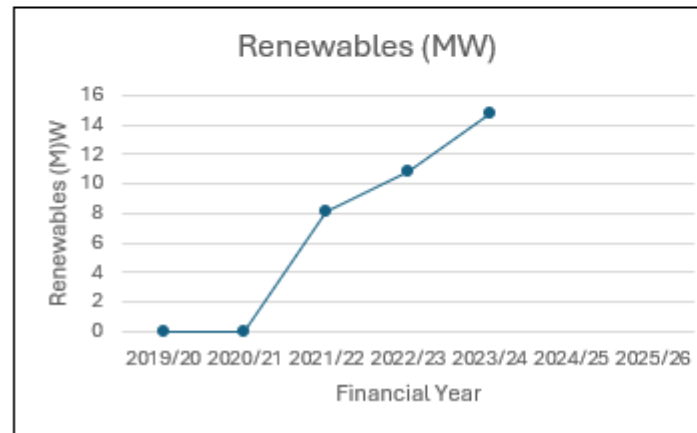
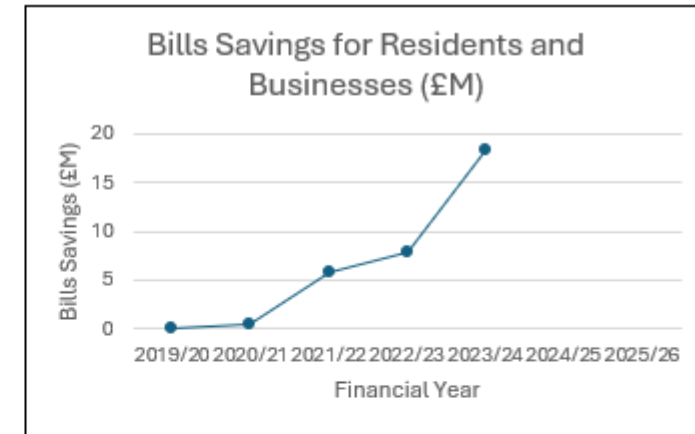
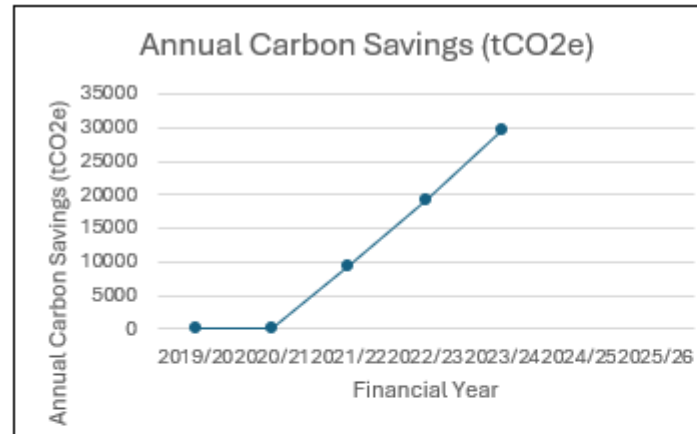


(Not to scale)

Value add – cumulative benefits

Estimate key benefits

**Cumulative impact across
all strategic priorities**



Value add – what is means of residents

Growing a sustainable economy so everyone can benefit



259



Businesses received grant funding

507



Free retrofit skills course places



New carbon reduction course for businesses

Tackling health inequality



1264



Fuel poor households treated

580



Free home energy surveys

62k



Warm welcome visits

Empowered and thriving communities



2177



Households purchased solar

32k



Pupils received active travel training

2802



BetterPoints users

Enabling a greener future



558k



Trees planted across Surrey by SCC and partners

TBC



Sustainably managed woodland



New strategy for biodiversity and nature recovery

Next step

Measure progress of scope 3

Develop stronger project-level KPIs

Roadmap of actions that build momentum

VFM of projects

Greater links to wider benefits such as health



SURREY
COUNTY COUNCIL

Surrey's Greener Future

Thank you for listening