

Public Sector Pioneers - reusing IT equipment to bridge the digital divide

Public sector pioneers are leading the way:

- donating retired IT equipment to the National Device Bank
- reducing e-waste, and delivering social impact

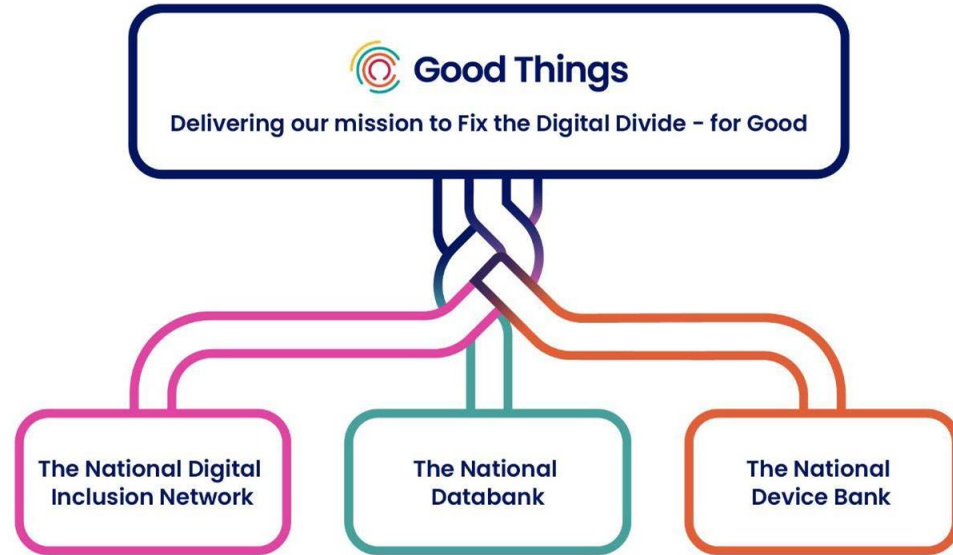


Good Things

Good Things Foundation

We want everyone to:

- Have the internet access they need
- Have somewhere local to go for help to use the internet
- Feel able and safe in the online world



Two goals: Fix the digital divide and reduce e-waste

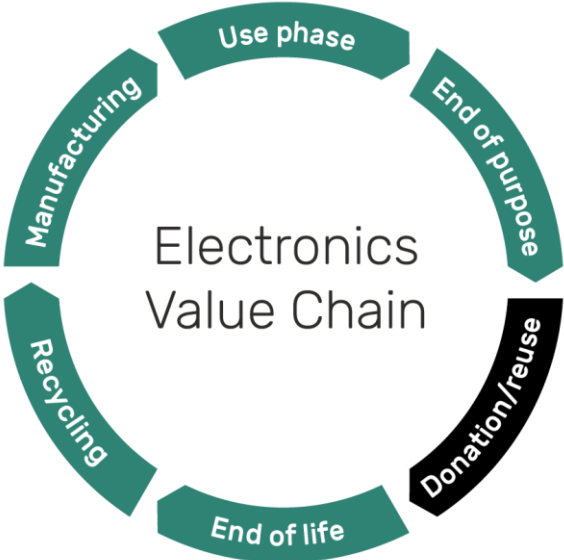
Reducing e-waste

- Electronic waste is the fastest growing waste stream on our planet
- IT sits is high in the 200,000 tonnes of UK business e-waste thrown away each year
- 70-90% of lifetime embodied carbon is in producing new kit – so reuse has a huge impact



Digital Nation 2023 - Sources include data from Ofcom, Lloyds Bank UK Consumer Digital Index, Nominet Digital Youth Index <https://www.goodthingsfoundation.org/insights/building-a-digital-nation/>

Research partnerships: Reusing IT equipment to bridge the digital divide



Circular electronics for social good: Reusing IT equipment to bridge the digital divide

2023

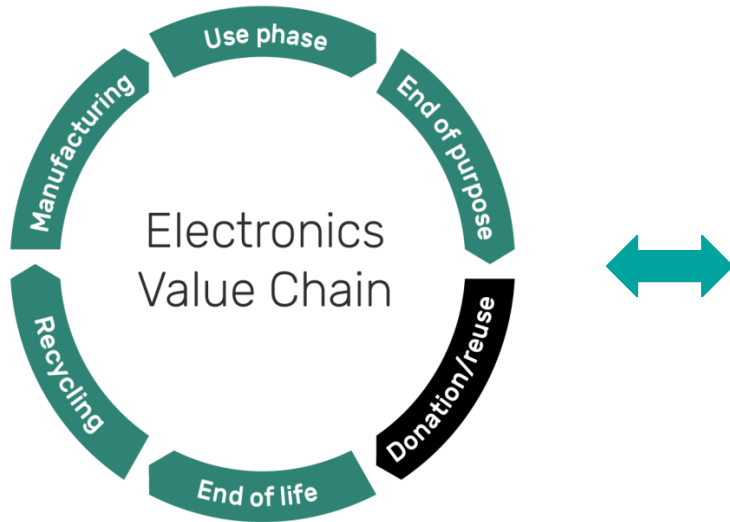


Public sector pioneers: Reusing IT equipment to bridge the digital divide

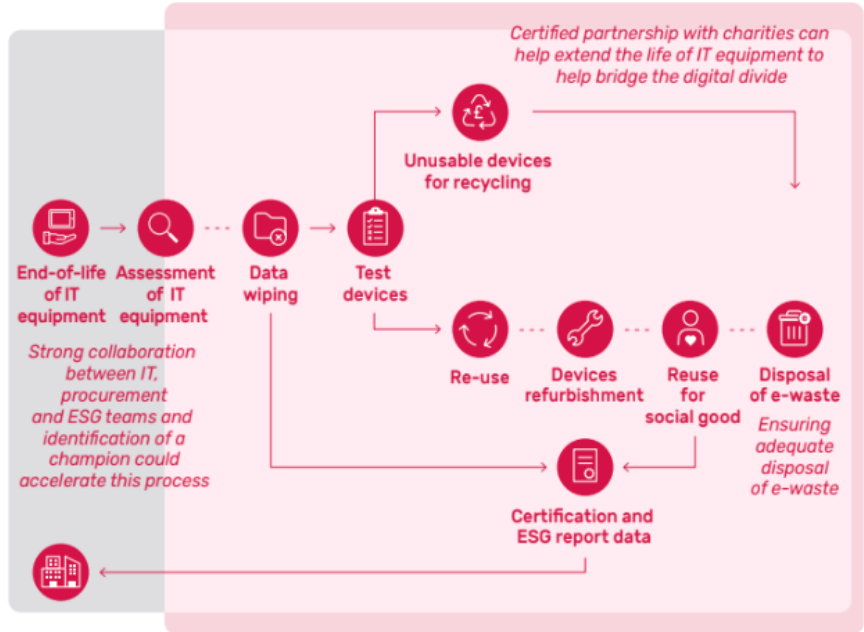
2023



The 'Circular Electronics for Social Good' model



Circular electronics for social good model



Key

- Donating organisations
- Civil society organisations
- Transportation cost

Public Sector Pioneers: Takeaways

Takeaways

- **One model with many pathways** - reflecting differences in how involved public sector organisations wanted to be at each stage
- **Strong motivations in the public sector** for reuse and donation; digital exclusion, net zero goals, giving back to communities
- **Barriers and enablers for the public sector** were similar to the private sector; no barriers were insurmountable
- **Sector differences** - across government, health, and education - less significant than differences between individual organisations

"We can't just dump them ... We're adding some value for our residents and they're being utilised and given a second life. So it's the right thing to do really"

"If we can find a way to do this for free, that's what we want"



Assets



Bureaucracy



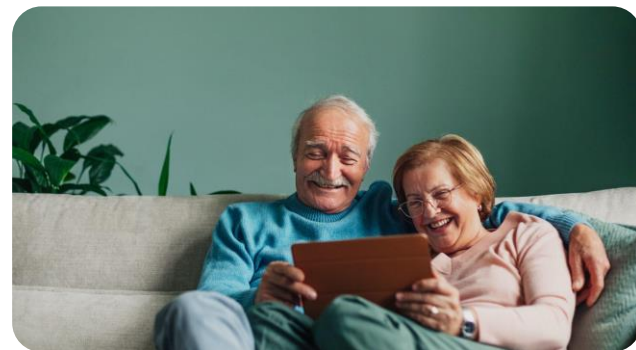
Costs



Data security



Equity

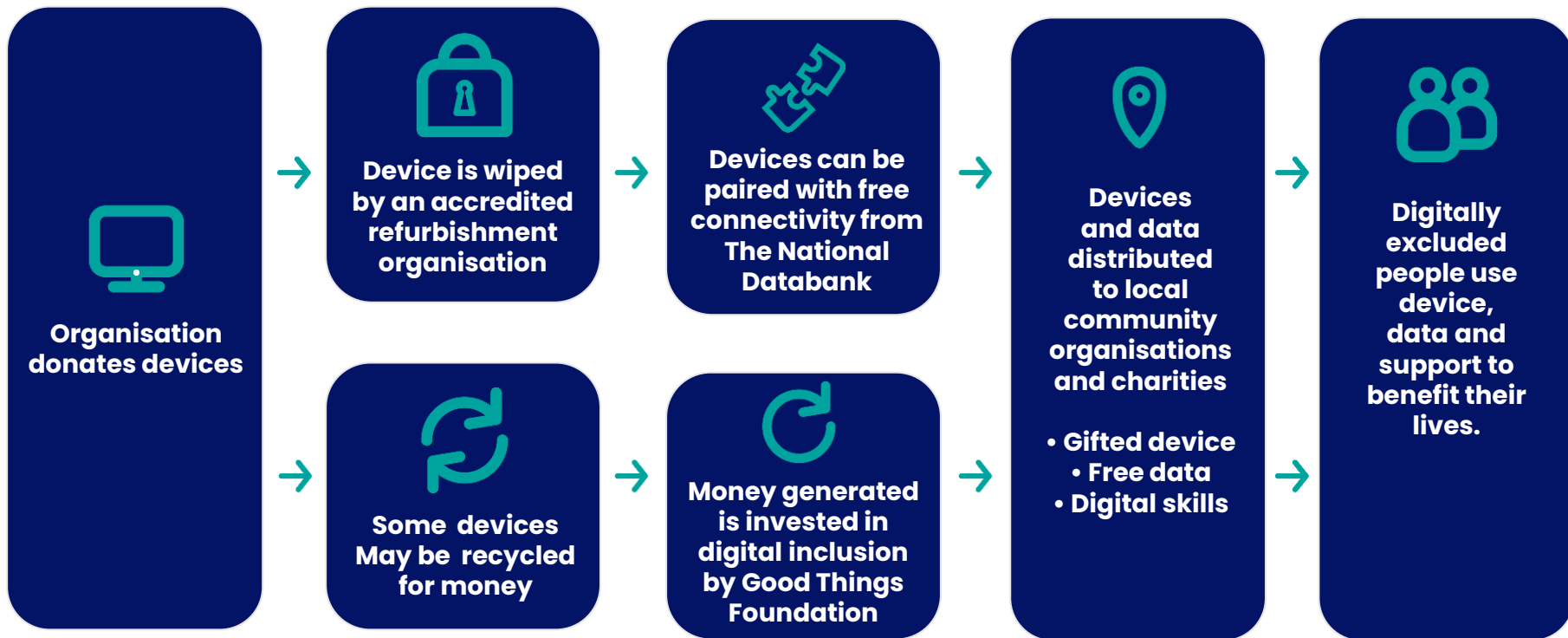


Motivation into action: The 5 C's



Culture	Collaboration	Champions	Chiefs	Catalysts
<p>Especially around managing risks</p> <p>Partnering with reputable organisations with fully certified processes and assurances</p> <p>In-house data wiping (before passing to a reputable partner)</p> <p>Up-to-date understanding in organisations</p>	<p>Once collaboration was in place, momentum built</p> <p>Successful approaches: identification of decision-makers, getting internal buy-in, cross-department communication</p> <p>Collaboration with charities or firms, national & local schemes</p>	<p>Personally & professionally motivated to reduce social inequalities and e-waste</p> <p>Found in a variety of roles & positions</p> <p>Skilled in motivating others</p>	<p>Champions in senior roles</p> <p>Easier to get decisions 'over the line'</p>	<p>COVID-19</p> <p>Asset refresh cycles / office refurbishments</p> <p>Regional initiatives</p>

How does the National Device Bank work?



A case study: Liverpool City Region

Rob Benson, Digital Inclusion Lead
Investment and Delivery
Liverpool City Region Combined Authority

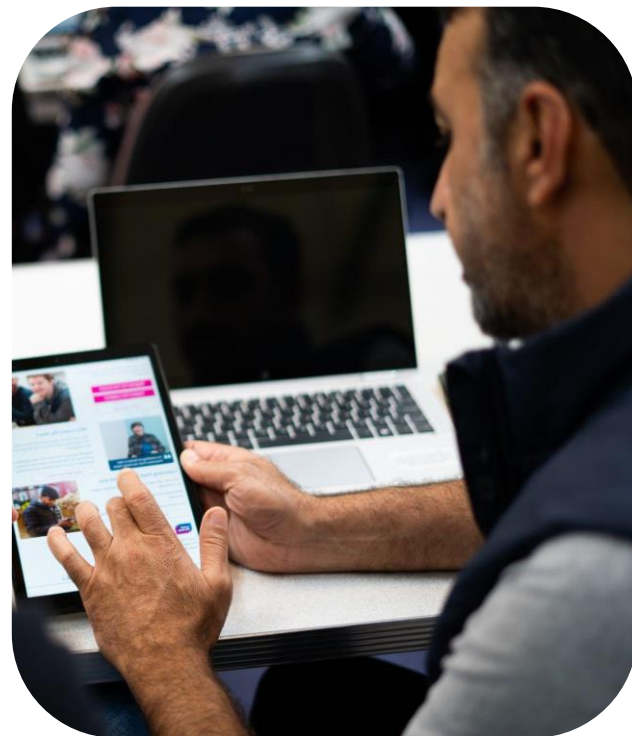


**LIVERPOOL
CITY REGION**
COMBINED AUTHORITY

METROMAYOR
LIVERPOOL CITY REGION



**LIVERPOOL
CITY REGION**
**DIGITAL
INCLUSION
NETWORK**



Context – Digital Exclusion in LCR



28% of LCR Residents
lack essential digital skills



230,000
Economically inactive &
41,000 Unemployed



65,000 Pupils on Free School
Meals in LCR
23% of which Nationally have no
Broadband



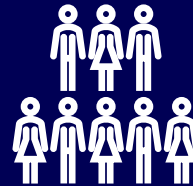
50% of Households
with Children in LCR do not
meet the new Minimum
Digital Living Standard



82% of jobs require
digital skills



Individuals save up to
£900 on average online



56% of non-internet
users are disabled adults



One third of LCR
Neighborhoods fall into the
10% most deprived
nationally

Where you find deprivation, you'll find digital deprivation.

Why is it important?

- Our old digital equipment was often destroyed, ending up in landfill
- Growing ICT estate with 1100+ Employees
- Hundreds of thousands of digitally excluded individuals across LCR requiring support
- Supporting our local community and voluntary sector
- Social Value
- Environmental Needs & Net Zero
- Corporate Plan & Digital Inclusion Aims



How did we do it?



Business as usual embedded into ICT procurement device refresh

What next?

- **Over 600 devices donated into National Devicebank**
- **Integration in our forward ICT planning and device refresh programmes**
- **Engagement with our six local authorities – some nearing the finishing line!**
- **Outreach & engagement to LCR Businesses & Enterprises**
- **Outreach to local organisations & GTF Digital Inclusion Hubs to draw-down**



Creating your own pathway

Creating your own pathway to circular electronics for social good: Checklists

Step 1 Knowing your organisation

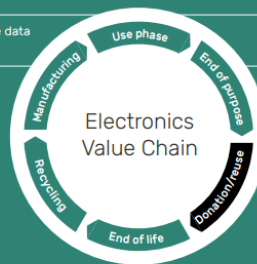
- I know donating IT equipment for reuse could support our net-zero goals and our social impact goals
- I know who is responsible for deciding what happens to end-of-life IT equipment
- I know what happens currently with end-of-life IT equipment and any existing contractual commitments around asset disposal that need to be considered
- I know that the benefits (social, environmental, employee engagement) of donating devices to fix the digital divide outweigh the cash rebate (if any received)

Step 2 Deciding a reuse pathway which works for your organisation

Stage in the Circular Electronics for Social Good model	We choose to do this:	
	In-house	With a Partner
Identifying end-of-life IT assets	<input type="checkbox"/>	<input type="checkbox"/>
Assessing what has potential for reuse and what has to be recycled	<input type="checkbox"/>	<input type="checkbox"/>
Data wiping to required standards	<input type="checkbox"/>	<input type="checkbox"/>
Testing to sort what is suitable for reuse, recycling, or disposal	<input type="checkbox"/>	<input type="checkbox"/>
Refurbishing to high standard for digitally excluded people	<input type="checkbox"/>	<input type="checkbox"/>
Pairing devices with free data connectivity	<input type="checkbox"/>	<input type="checkbox"/>
Deciding who receives devices	<input type="checkbox"/>	<input type="checkbox"/>
Distributing devices to recipients	<input type="checkbox"/>	<input type="checkbox"/>
Digital inclusion support for recipients	<input type="checkbox"/>	<input type="checkbox"/>
Reporting - ESG metrics and stories of digital inclusion impact	<input type="checkbox"/>	<input type="checkbox"/>
Secure storage and/or transport for each step of the journey	<input type="checkbox"/>	<input type="checkbox"/>

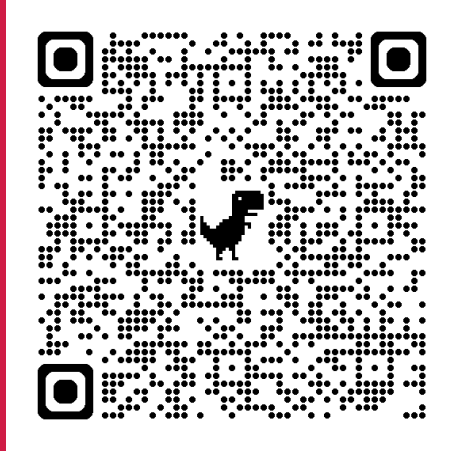
Step 3 Final checks

- Senior commitment is in place to reuse IT equipment to bridge the digital divide
- The end-of-life IT equipment has served its purpose in our organisation
- Reporting processes are in place to provide metrics and stories of positive impact
- External partners have the required and accredited expertise
- In-house partners have the required and accredited expertise
- Our pathway complies with legislation and regulation on data security and e-waste
- Our pathway is cost-effective (no cost or low cost)
- There is clarity on which organisations or partners cover which costs
- Agreements are in place on quality assurance, responsibilities and liabilities
- Appropriate mechanisms are in place to decide who receives devices
- Devices will be refurbished to a suitably high standard for digitally excluded adults
- Devices will be provided with free mobile data connectivity and digital skills support



Circular electronics for social good value chain

You can be a pioneer!



Download the
report including
the checklist